



# THE AWAKENED SOUL

ORACLE DECK  
& GUIDEBOOK

CREATED & WRITTEN BY ETHONY\*

ART BY DANIELLE MULLIGAN

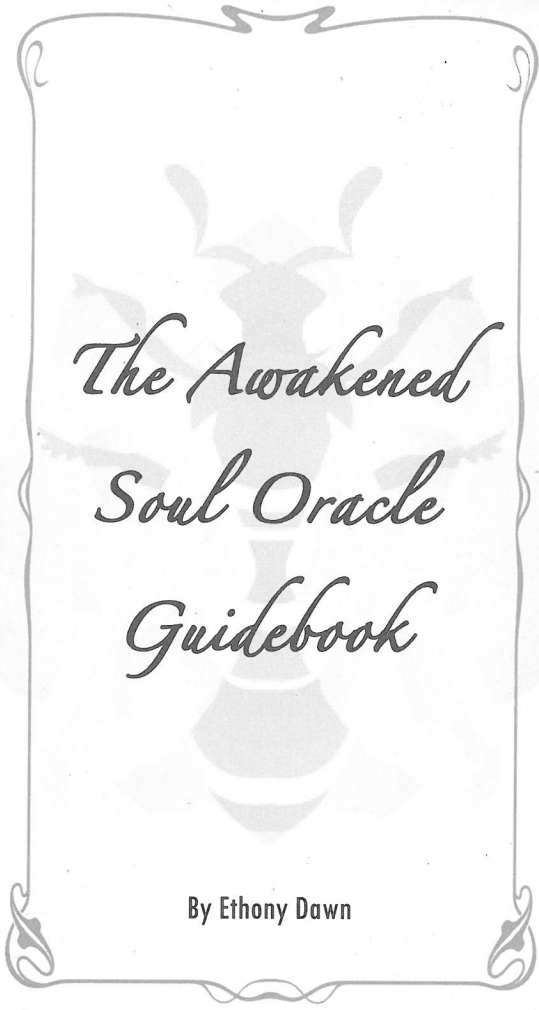
© 2020 ETHONY\*

[www.ethony.com](http://www.ethony.com)

# THE AWAKENED SOUL



GUIDE BOOK



*The Awakened  
Soul Oracle  
Guidebook*

By Ethony Dawn

© Ethony\* 2020, second edition

[www.ethony.com](http://www.ethony.com)

*To my son, who awakened the divine mother within me.*



## *Contents*



<b><i>The Awakened Soul</i></b>	<b>6</b>
<b><i>Cleansing and Charging your Deck</i></b>	<b>8</b>
<b><i>Ways to Work with your Oracle Deck</i></b>	<b>9</b>
<b><i>The Awakened Soul Challenge</i></b>	<b>10</b>
<b><i>How to use this Guidebook</i></b>	<b>12</b>
<b><i>Who is Gaia?</i></b>	<b>14</b>
<b><i>Awakened Soul Oracle Spreads</i></b>	<b>15</b>
<b><i>Awakened Soul Spread</i></b>	<b>16</b>
<b><i>Boundaries Spread</i></b>	<b>17</b>
<b><i>Manifestation Spread</i></b>	<b>18</b>
<b><i>Lunar Spread</i></b>	<b>19</b>
<b><i>3 Card Spread</i></b>	<b>20</b>
<b><i>Awakened Soul Oracle Cards and Meanings</i></b>	<b>23</b>
<b><i>About the Creator</i></b>	<b>124</b>
<b><i>About the Artist</i></b>	<b>125</b>

### *Awakened Soul Oracle Cards and Meanings*

<i>Action</i>	24	<i>Magic</i>	74
<i>Adventure</i>	26	<i>Mantra</i>	76
<i>Authenticity</i>	28	<i>Meditate</i>	78
<i>Boundaries</i>	30	<i>Mirror</i>	80
<i>Challenge</i>	32	<i>Perseverance</i>	82
<i>Change</i>	34	<i>Perspective</i>	84
<i>Cleanse</i>	36	<i>Rebirth</i>	86
<i>Compassion</i>	38	<i>Release</i>	88
<i>Connection</i>	40	<i>Rescue</i>	90
<i>Desire</i>	42	<i>Sanctuary</i>	92
<i>Devotion</i>	44	<i>Sensuality</i>	94
<i>Dream</i>	46	<i>Shadow</i>	96
<i>Family</i>	48	<i>Shapeshifter</i>	98
<i>Forgiveness</i>	50	<i>Silence</i>	100
<i>Fun</i>	52	<i>Simplicity</i>	102
<i>Gaia</i>	54	<i>Solitude</i>	104
<i>Gift</i>	56	<i>Song</i>	106
<i>Gratitude</i>	58	<i>Sovereignty</i>	108
<i>Grounding</i>	60	<i>Surrender</i>	110
<i>Guidance</i>	62	<i>Treasure</i>	112
<i>Healing</i>	64	<i>Trust</i>	114
<i>Judgment</i>	66	<i>Truth</i>	116
<i>Knowledge</i>	68	<i>Unplug</i>	118
<i>Labyrinth</i>	70	<i>Vision</i>	120
<i>Leadership</i>	72	<i>Wisdom</i>	122

## *The Awakened Soul*

**It starts with a calling  
deep  
stirring**

**It starts with a step  
just  
one**

**It starts with a question  
why?**

**It starts with a feeling  
connected  
belonging**

**It starts with a song  
your  
voice**

**It starts with awakening  
awaken  
soul**

**Welcome home Awakened Soul**

*We have all experienced a spiritual awakening, this is what has lead you here. It happens when we start searching for something more within, and without. When we feel that we are more connected to the energies of the world.*

*You are an Awakened Soul if you light candles, set an altar, sit with the cards, lovingly shuffle them and read the cards for hours.*

*You are an Awakened Soul if you pull out your deck for some quick guidance while on the bus on the way home from work.*

*You are an Awakened Soul if you read for your friends in a café.*

*You are an Awakened Soul if you use your cards to help you finish the novel you have been writing.*

*You are an Awakened Soul if you use the deck only in sacred circle.*

*You are an Awakened Soul if you alone touch your deck.*

*You are an Awakened Soul if everyone is allowed to touch you deck.*

*You are an Awakened Soul if you aren't psychic or a witch, or pagan.*

*You are an Awakened Soul if you have a corporate job.*

*You are an Awakened Soul if this is the very first oracle deck you have ever used.*

*You are an Awakened Soul if this is the twentieth oracle deck you own.*

*You are an Awakened Soul.*

*Use the deck however you feel inspired and drawn to do so. My hope for you is that it inspires you and deepens your connection to your self and your spiritual path.*



## *Cleansing and Charging your Deck*



You can welcome your new sacred tool into your practice by performing rituals such as:

- ~ A cleansing ritual - conduct a smoke ritual with sage, Santo Palo, herbs and grasses to clear the energy in the cards.
- ~ A charging ritual - leave it on a closed windowsill under the light of a full moon. I also place clear quartz crystals on top of my decks while they charge.
- ~ An intention ritual - do an elemental blessing or ritual stating the work that you would like to do with your deck.

You also want to cleanse and charge your deck when they become heavy with energy, or your readings become confusing. If you use your deck regularly, a good practice is to charge it under the light of every full moon, or in the sun every month.

## *Ways to Work with your Oracle Deck*



The uses for these cards are only limited by your imagination. Here are some suggestions on how you can work with your deck:

- ~ Draw a card at the beginning or end of each day and reflect in a journal on its significance in your day, or the personal meaning to you.
- ~ Use your oracle deck in your readings for yourself, clients, friends and family.
- ~ Meditate with a card to bring the energy into your life or to unlock deeper insight.
- ~ Sleep with a card under your pillow to aid in dreams and connect your subconscious to the card.
- ~ Use the cards as a magical tool.
- ~ Use the cards as a creative tool.

## *The Awakened Soul Challenge*

**Will you join me on a 13-day challenge? Let's awaken some magic and intuition!**

**All you need for this daily challenge is your Awakened Soul Oracle Deck and your favourite journal. Or, you can share your draws on your social media account if you prefer microblogging.**

**Daily practice helps awaken and strengthen your intuition. This important voice allows you to live in alignment with your values and give you incredible guidance from within.**

**To create a sacred ritual it can be powerful to do the challenge at the same time every day. You may also like to set up an altar with some sacred items to help you connect with your intuitive energies and so you can charge your deck.**



**Use the following prompts as guides for deeper intuitive learning. As you shuffle the cards, repeat the prompt in your mind, and feel it in your body. Then when you feel called, draw a card.**

*Next, use your intuition to write your impressions, feelings and thoughts about the card, its symbols, and energy before you consult with the Guidebook.*

*Day 1. What is awakening within me right now?*

*Day 2. What fears may be holding me back from developing my intuition?*

*~ Tip - look at the shadow meaning of the card you draw.*

*Day 3. What energy do I need to bring more of into my life?*

*Day 4. What symbol or guide is working with me right now?*

*~ Tip - look at the symbols in the card for guidance.*

*Day 5. What does my body need more of?*

*Day 6. What does my soul need more of?*

*Day 7. What does my mind need more of?*

*Day 8. What am I being asked to release?*

*Day 9. What archetype am I in alignment with right now?*

*Day 10. What action am I being asked to take today?*

*Day 11. How can I walk more in alignment with my soul's purpose?*

*Day 12. How can I access more of my own magic?*

*Day 13. How can I be of service to the world?*

*Use #awakenedchallenge to share your draws and join the community for support. Also check out my YouTube channel for extra inspiration about the challenge, including my own experience with it at [www.youtube.com/Ethony](http://www.youtube.com/Ethony)*

## *How to use this Guidebook*



*This Guidebook has been divided into sections to aid your intuition, help you connect and perform readings with the Awakened Soul Oracle Deck. Use the Guidebook for confirmation, to deepen your understanding of the meanings and to advance your spiritual growth.*

*To create a personal connection to the card's images and keywords, try spending time with each card without referencing the Guidebook as well.*

*The Guidebook can also be read just like a normal book, you'll find many insights that will resonate with you. Always trust your intuition with the meanings of the cards above anything else within this Guidebook. We all have different perspectives, interpretations and wisdom to bring to the Oracle.*

***The Symbols** have been chosen specifically as energies aligned to each card. They can be used as a way to connect to the card. Pay attention to symbols in your everyday life, you may see them much more now you are working with these Awakened Soul symbols.*

***The Keywords** can be used as a jumping off point for your intuition.*

***The Awakened Soul Story** describes the meaning of the card, the symbols, background and meaning of the images.*

***The Awakened Meaning** is the meaning of the card when you have pulled a card or are doing a reading. There is more than one aspect of these meanings. Listen to what resonates with you.*

*This can also be seen as upright meanings if you read reversals. Reversals are when you draw a card and the image is upside down instead of upright.*

**The Shadow Meaning** is when the energy of the card is being blocked, denied or resisted. You will know that the card is in the shadow aspect when the shadow meanings are reflected in your current situation. If you are reading the Awakened Meaning and nothing is resonating, look to this section of the book to see if the shadow side is present.

*There are powerful messages and lessons in Shadow work. To get back to the Awakened Meaning work with the Shadow aspects of the card.*

*This can also be seen as reversal meanings if you read reversals.*

**The Affirmations** can be used to help bring the energy and wisdom of each card into your life and align your energy with your spiritual work.

**The Personal Reflections** are questions that can be used as journaling prompts. When seeking guidance, sit with a question, shuffle the cards and see what card comes up for you.

## *Who is Gaia?*



*Gaia is spoken about many times in this deck and Guidebook. So who is she? In Greek mythology, Gaia is the great mother. She who gave birth to the Earth and all that the universe is and always will be.*

*All of the Goddesses, Gods and elemental forces, known as Titans, are her creation. Her embodiment is the planet we call home. We are all born on her, of her and we all return to her when we leave our physical bodies.*

*We are connected to her energy. Her health is connected to our health. Gaia is life. Gaia is the Goddess. Gaia is us.*

*When Gaia is spoken of in the Guidebook and shown in the deck she is that reflection of the connection to our home and creation. To love and the universe, however you see her.*

## *Awakened Soul Oracle Spreads*

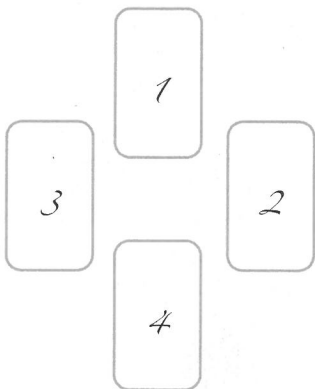


**To use these Oracle Card spreads, shuffle your deck while holding in your mind your specific question or what you would like the reading to illuminate. Do this for as long as it feels right. When ready, cut the deck and place the cards on the numbers in order as you draw them.**

**If you don't read reversed cards and a card is upside down when you draw it, simply rotate the card the right way up.**

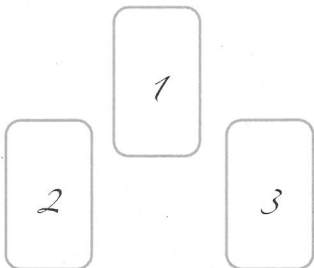


## *Awakened Soul Spread*



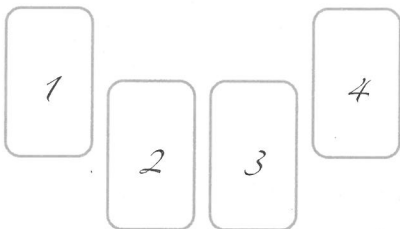
- 1. What is awakening within you?**
- 2. What can support it?**
- 3. What are you resisting?**
- 4. What is slumbering?**

## *Boundaries Spread*



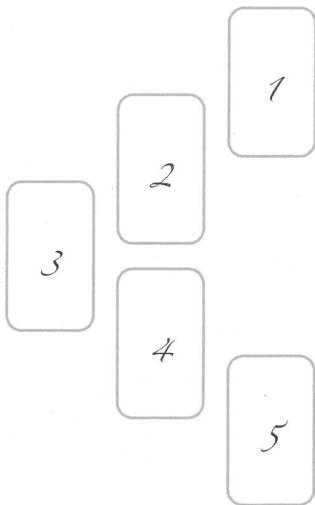
- 1. What boundaries need strengthening?**
- 2. What boundaries do I need to set?**
- 3. How can I hold space for my power?**

## *Manifestation Spread*



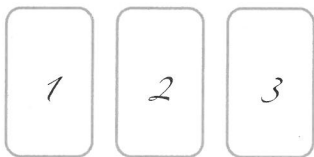
- 1. What is blocking my manifestation mojo?**
- 2. What can aid in removing it?**
- 3. What are my energetic allies in manifestation?**
- 4. What are my next steps to manifest my desires?**

## *Lunar Spread*



- 1. New Moon - What is sprouting?**
- 2. Waxing Moon - What is gaining momentum?**
- 3. Full Moon - Where is my power, where should I focus?**
- 4. Waning Moon - What needs releasing?**
- 5. Dark Moon - What is hidden from me? What can't I see?**

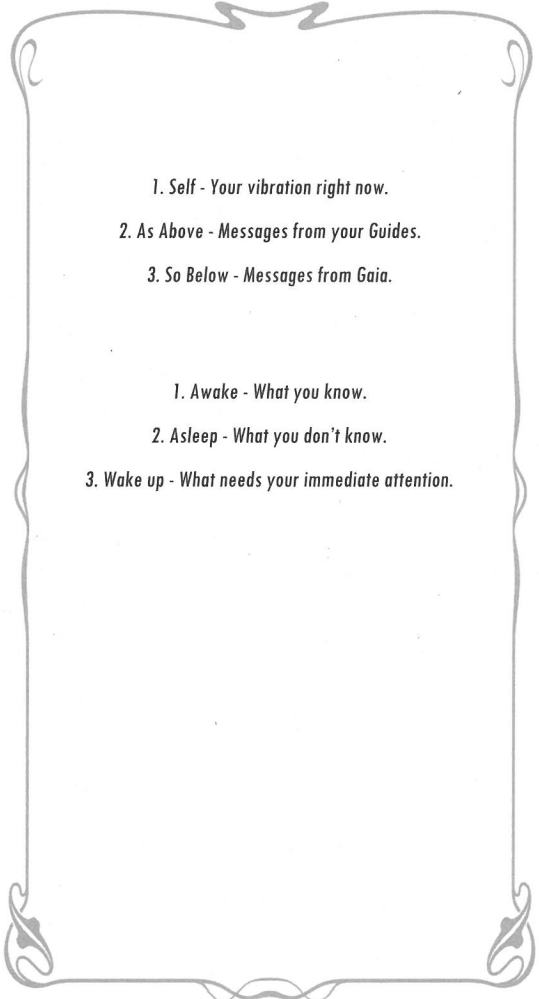
## *3 Card Spread*



**A number of my favourite options  
for three card spreads.**

- 1. Present - Where am I right now?**
- 2. Future - Where am I going?**
- 3. Journey - How am I getting there?**

- 1. Do More - Focus and a call to action.**
- 2. Do Less - Release and let go.**
- 3. Advice - What you need to hear.**

- 
- 1. Self - Your vibration right now.*
  - 2. As Above - Messages from your Guides.*
  - 3. So Below - Messages from Gaia.*

- 1. Awake - What you know.*
- 2. Asleep - What you don't know.*
- 3. Wake up - What needs your immediate attention.*



*Awakened Soul Oracle  
Cards and Meanings*





## Action

Symbol - bow and arrow

Keywords - advance, momentum, movement, initiative



### *Awakened Soul Story*

Our Awakened Soul is in charge and moving ever forward. She is confidently riding her horse in pursuit of her goals. Her arrow has been pulled back and is ready to fly in the direction of her careful aim. She knows that going for her dreams can be like a bow and arrow, at times her energy has been pulled back, just like the arrow, but this allows her to take aim and advance forward. To ride and hunt takes great skill and a trusting relationship with her horse. She knows that she is the only one who can move herself into the future she desires.

### *Awakened Meaning*

This is the time to act. No more waiting or sitting on the sidelines. If you have been looking for a sign to move, this is it. You can do it, don't be afraid to act. Don't allow the fear of doing the wrong thing or making a mistake stop you from doing what you need to do. These experiences are crucial to your growth.

You are being called to take control of the direction your life is going and to check that your actions are aligned with a larger goal and vision. Little actions add up over time.

Consider where you are placing your energy. Give yourself permission to decide and move. You are in the driver's seat of your life.

It is time to execute your plans. Know that you are guided as you take action in the world as long as you listen to your inner guidance and act when your intuition urges you to.

### *Shadow Meaning*

Stalemate, indecision, fear of failure, looking for a scapegoat, pause.

### *Affirmation*

'I move forward into my power'

### *Personal Reflections*

Where in my life do I need to take action?

# Adventure

Symbol - compass

Keywords - travel, new experiences, unexpected  
visitors, expansion, openness



## *Awakened Soul Story*

Our Awakened Soul is asking you an important question. Will you walk through the door that is in front of you? You have your life experiences in the backpack and all of the tools you need to take you where you want to go. The path may not always be clear and you might have no idea what is on the other side of the door, but you are called to walk up those stairs, brush away the overgrown branches and walk through.

The compass represents your inner compass. The gut feelings you have when you truly begin to listen and trust yourself. Travel and adventure are two wonderful ways to really learn to trust your abilities and intuition. You will always know the way when you truly listen.

## *Awakened Meaning*

You are feeling the wild calling. Life may have gotten a little too routine and predictable. You want more. This is a sign to shake it up a little. It is

up to you to be the one to take the first steps. No one else can do this for you. This is your time to experience something new.

Your inner compass will guide you. If you are very drawn to this symbol you may feel as though you are looking for your true North. While this can be found by going within, allowing yourself to expand through adventure is another way to find yourself.

Anything can be an adventure with an open mind and heart, and a sense of trust and curiosity. Adventure can be trying a new restaurant with food you've never had before. It can be going for a hike on a new trail. It can be taking a road trip or planning a retreat away. It can be tapping into the rawness of your spirit and allowing that to be expressed. Adventure is all around.

While you don't need to leave everything behind and backpack across Europe, if you have been waiting for an omen for that to happen, this is it.

### *Shadow Meaning*

Fear of the unknown, being closed or unwilling to try new things. This can also mean that you are too rigid and married to your routines.

### *Affirmation*

'I am open and awake to new experiences and horizons'

### *Personal Reflections*

What can I do to seek out new adventures today?

# Authenticity

Symbol - rainbow butterflies

Keywords - self-acceptance, shine, vibrancy, energy, self-esteem



## Awakened Soul Story

Our Awakened Souls all stand shining, the beautiful beings that they are. They have accepted who they are and love and support each other in their own authenticity and self-acceptance. The rainbow butterflies symbolize their freedom from other people's expectations and old limiting beliefs that no longer serve them. They do not need to get into situations that do not align with their vibration of authenticity.

The group of Awakened Souls stands under clear skies and bright sunlight. They do not hide. This card also speaks of the love that we show when we allow others to be who they are. When individuals accept and love themselves it can help heal their communities.

## *Awakened Meaning*

Who are you? Do you know? Is the life you are living a reflection of who you really are? These can be hard questions to answer, but you only get this time on Earth to be who you really are. Accepting yourself is one of the greatest, most freeing gifts you can have in life. Allow yourself to be who you really are and live your life to the fullest.

You can change, you get to choose who you are, who you will become and the path that you walk. This is a call to be in your energy fully and not to be overly concerned about what others may think of you.

This is also a call to find people who celebrate your authentic energy, are supportive and share your positive vibrations. Shine brightly for all that you are, don't dim that shine or hide your light away.

Support others in their authenticity, be a listening ear and a supportive energy when people around you are experiencing alignment into their own authenticity.

## *Shadow Meaning*

Bending to peer pressure, obligations, hiding, living someone else's life.

## *Affirmation*

'I fully accept who I am with love'

## *Personal Reflections*

How can I live in a more authentic way?

# Boundaries

Symbol - magic circle

Keywords - assertiveness, care, self-love, energetic awareness



## *Awakened Soul Story*

Our Awakened Soul is casting a magic circle which acts as an energetic boundary to contain her magic until she is ready to release it. It takes training and energetic awareness to be able to cast a successful circle. She has to be aligned in her mind, body and soul. It also ensures that outside energies don't interfere with her focus and work.

A magic circle or boundary does not have to be just in ritual. We can create our energetic protections every day. She is aware of her boundaries in everyday life, her magic, spiritual work and her job.

She also knows how to pull this energy down safely and to give it back to Gaia, taking care of her energetic health.

## *Awakened Meaning*

It's time to look at both the energetic and physical boundaries that you have in place. Take a look at your relationships,

environment, work, spiritual community and any other area where you have an energy exchange or relationship. Do you feel comfortable in these spaces and relationships?

Every day you make a choice of how people treat you through what you will accept or reject as being appropriate. This is a call to take responsibility and know that you can change things for the better - starting right now.

Saying no can be an act of self-love and is often extremely brave. Don't be afraid to put yourself first before you do things for other people or expend your energy outward.

You may feel as though your boundaries are being tested at the moment. This is completely normal, especially if you have recently changed the dynamic of relationships through your own self-care. Know that it will get smoother and easier the more you are in your power. Assert your right to kindly say no.

### *Shadow Meaning*

Obligations dictating actions, guilt, giving too much, saying yes to things you would rather not do.

### *Affirmation*

'I protect and assert my boundaries in a healthy way today'

### *Personal Reflections*

Where do I feel stressed in my relationships?

How can I put myself first more?



# Challenge

Symbol - chessboard

Keywords - challenge, strategy test, opposition



## *Awakened Soul Story*

*Our Awakened Soul is about to play a game of chess. Something that she has done many times before. She loves being challenged by the best and wants to play people who are going to test her abilities. She has spent many hours building her skills and enjoys putting her skills to the test.*

*One of the wonderful things about chess is that once the game is over you can reset the board. This reminds us that even if we lose or fail at something we can always try again and take our experience of the with us.*

*Sometimes it is the sheer enjoyment of being in a friendly challenge with likeminded people that we need. It keeps our minds sharp and there is always potential to learn something new.*

## *Awakened Meaning*

It is time to raise the bar! Rise up to the challenge at hand and see what is in front of you as an opportunity to grow. Find people who challenge you. When you aren't challenged you'll get stale and stuck, and won't move forward or get to your goals.

There are many ways to face challenges, look at employing tactics and carefully considered plans to remain focused. A good strategy will allow you to clearly prioritize and ensure you will reach your goals.

You may find at this time that your plans are being opposed and you feel that people are in competition with you. While this may be true, you have the final say as to how you will conduct yourself during this time and what outlook you will have. Direct your energy into something constructive.

It is time to embrace your inner warrior and see that confrontation is sometimes needed. Check your energy when it comes to confrontations in your life. Are you going headfirst into things like a wrecking ball with little consideration for others? Or do you retreat from all confrontation even when standing up for yourself or others is needed?

## *Shadow Meaning*

Resting on your laurels, shying away from being tested, avoiding confrontation, aggression.

## *Affirmation*

'I am ready to go to the next level.'

## *Personal Reflections*

What areas in my life can I seek more challenges?

# Change

Symbol - snake

Keywords - shift, movement, realignment,  
disruption, transformation, metamorphosis



## *Awakened Soul Story*

Our Awakened Soul is not afraid of the snake that she is holding. She is looking straight into its eyes. She is confident and sure in the face of change. Snakes have long been a living symbol of change. Can you stand your ground and look at this change straight on?

As the snake sheds it's skin it reminds us that this is needed to grow. Snakes shed their skins when they become too tight, small and restrictive. Staying still for too long can cause you to get stuck.

When you allow things to take their natural course you will find the changes still happen but the journey will be easier because you understand the nature of change - nothing ever stays the same.

## *Awakened Meaning*

Change is inevitable and will come whether or not you want to accept it. Change can be scary, hard, and sometimes downright heartbreaking. When you are able to accept that change is the only constant in the universe, you can deal with it with more ease. The only thing you have true control over is how you act and react and your actions that define who you are. One of my favorite sayings about change is 'shit happens so shift happens'.

This card is asking that you look at the events that are happening to you and around you in a new light.

The more you resist change, the harder it is to move forward, and often the further behind you become. Other people grow and reach new goals while you are stuck in the past unwilling to change to move forward.

Take some time to contemplate this card. Is the change you are experiencing an inner change or an external change? Is it a small change or something more drastic? Not all change needs to be life changing, even the small shifts can illuminate so much.

## *Shadow Meaning*

Inability to move. Being stuck. Defying what is. Denial.

## *Affirmation*

'I allow change to happen in my life with grace'

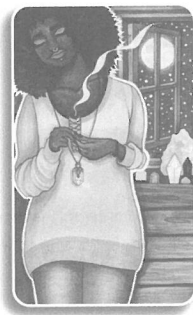
## *Personal Reflections*

How can I shift my perspective about change?

# Cleanse

Symbol - smudging tools

Keywords - space, cleaning, cleansing, purification, ritual



## *Awakened Soul Story*

Sacred space can be created wherever you are. Our Awakened Soul is cleansing her home through the ritual of a smoke ceremony, known as smudging. She has set the intention to shift the energy and allow for positive flow in her living space.

With her candles lit and windows open she has created space for ritual in her life. This is an important part of her spiritual routine and expression that she does on a regular basis. Any time she feels static in her space she gets her sacred cleansing tools and clears her space anew.

## *Awakened Meaning*

If you feel that your thoughts are clouded and your energy is heavy, this card calls you to open up all of the windows, get out your cleansing tools and move that stale energy out. You can do this with music, bells, smoke ceremonies, singing and chanting, space sprays, salt and drumming. Find whatever cleansing rituals work for you and your spiritual practice.

*This can also be a call to declutter and have a good old fashioned spring clean (no matter what time of the year it is). Sell, donate or recycle what you don't need and let it go. We can get overly attached to our 'things'.*

*This is the card of energetic hygiene. Your energetic space also requires attention and cleansing. Is it time for a cleansing bath or shower? Do you need a trip to the ocean to get cleansed by the salt water? Take some time to clear and reset your energy bodies as well as your physical space.*

*If you are feeling unwell this is a call to look at eating cleaner food and making healthier lifestyle choices.*

### *Shadow Meaning*

*Stagnation, stifled energy, energy blocks.*

### *Affirmation*

*'I allow for sacred space to be a part of my life'*

### *Personal Reflections*

*How can I create more space today?*

# Compassion

Symbol - Orangutan

Keywords - understanding, empathy, connection, oneness, unity



## *Awakened Soul Story*

Our Awakened Soul comes in contact with a baby Orangutan in the wild. These two young sacred beings see each other as kin. They are connected and can see themselves in each other. The little girl feels the pain and fear that the Orangutan has over losing her natural habitat through human greed and apathy. Through this connection she is able to make changes in the world to help protect it for her animal kin.

Orangutans are connected to inner knowing and sharing. They ask us to move into our heart space where compassion comes from and grows.

## *Awakened Meaning*

This is a gentle call to understand your impact on the natural world. To recognise your impact on each other, our planet and yourself. To minimise the damage done and to tread lightly.

You are being called to bring your energy into your heart space. See your current situation through this space and come to an understanding through love. Look at solutions that are graceful and soft. Know that this is the best way forward. It is not weakness, it is divine strength to know true kindness. Your acts of kindness and open-heartedness will have a powerful impact in ways that you will likely never see.

Are you able to put yourself in someone else's shoes? Dare to care about people, about the planet and yourself. Know that we are all connected and all in this together. Can you be a tender-hearted person in a world that often wants us to be cruel and careless?

This is the card of accessing and developing your empathic gifts. To learn to observe and not absorb and still have healthy boundaries in place for yourself.

### *Shadow Meaning*

Selfishness, cold-heartedness, closed off energetically, disconnected, isolated from energy and love.

### *Affirmation*

'I am connected to all things and I see them with love'

### *Personal Reflections*

How can I pay forward my gift of kindness and compassion?



## *Connection*

**Symbol - Adho Mukha Savasana (downward facing dog)**

**Keywords - foundation, self-awareness, introspection, open-heartedness**



### *Awakened Soul Story*

Our Awakened Soul deeply knows the benefits of being connected to her body and sacred breath. The power of daily yoga practice and allowing herself to have space outdoors to feel the elements has expanded her understanding of herself, her body, her limits and her spirituality.

She is in Yoga Asana which is a foundation pose. It allows the yogi to open up, let go of any emotions or negative reactions that may have risen in the session around failure and success.

This sacred connection to the divine in herself overflows into her daily life and her work in the world. She is able to walk authentically in her energy and serve others through her daily practice.

### *Awakened Meaning*

You are being called to connect back to your breath. When was the last time you took a deep breath? Allow yourself to feel full with inhalation

and the release that comes with exhalation. This is one of the divine rhythms of your body.

This is also a call to connect to your physical body, to recognise and honor it for the amazing temple that you have been given in this life. The gifts and the limitations. People often go through the day more focused in their minds that they forget to connect to their sacred vessel and listen to its needs. The body always knows.

It is time for a reset, create the space for a good night's sleep and allow your body to rest.

Do not underestimate the strength and flexibility needed to be genuinely connected in life. Fostering genuine connection is a sacred practice your attention is being drawn too.

Spiritual connection is also an aspect of this card. If you are feeling disconnected to your spiritual practice go back to the basics.

This card also represents your connection to community and those you love. Your connection to nature and the flow of life. Check in with these today.

### *Shadow Meaning*

Being trapped in the mind, not sleeping enough or taking care of your body, ignoring your body's signals for care, disconnection.

### *Affirmation*

'I am home, I am centered, I am connected'

### *Personal Reflections*

How can I reset my spiritual practice in a way that allows me to let go of past emotions that are holding me back?

## *Desire*

Symbol - fire

Keywords - passion, fire, kundalini, connection, motivation



### *Awakened Soul Story*

Our two Awakened Souls come together with joint desires. They hold each other in a passionate embrace allowing the fire and heat to be drawn up between them and intensify together. Even in the darkness they have their individual passions and aligned desires to light the way and keep each other warm.

The flames circle upwards, spiralling like kundalini energy rising. Awakening passions and drive for connection, success and feeling.

### *Awakened Meaning*

Desire is a huge driving and motivating force. It can help you complete creative work and bring new things to life. It can be the one and only thing that keeps you going after setbacks on the road to your goals. It is the 'why' of the work you do in the world. What is your why? What are your passions and are you expressing them?

It can also be wildly temperamental and all consuming, especially when it comes to the passion you feel towards other special people. This card can also be a reminder to check in to see if your passions are the only thing in the driver's seat. Are you being smart and practical too?

Desire is the maddening pull you feel when you deeply want something. It is the longing that sparks love songs and poems. People often desire what they think they want and then when they have it they don't desire it any more. The desire is in the longing. Check your desires and their intentions while you are manifesting.

Desire is linked to your wishes and making magic. When you connect to your fiery desire, when you feel it in your body you can use it to create change in your life. It is time to align your desires to your reality.

### *Shadow Meaning*

Unmotivated, apathetic, abandoning dreams and goals, denying your passions in life.

### *Affirmation*

'I consciously align my desires with my highest good'

### *Personal Reflections*

How does it feel for you when you deeply desire something or someone?

## *Devotion*

Symbol - worn ballet shoes

Keywords - discipline, commitment, loyalty, support



### *Awakened Soul Story*

Our two Awakened Souls are professional ballet dancers. They are focused in a dress rehearsal on the stage where the culmination of years of hard work, blood, sweat, tears and passion are paying off. This is their purpose in life and they are focused completely in this moment and fully there for each other.

They have both worked countless hours individually but also with each other. Learning to trust and know each other's strengths and weaknesses, to complement each other as one. They are truly devoted with open hearts to their work and each other as dance partners.

In a field where the only way you can succeed is to be completely committed, they understand what this means to be truly devoted to their art.

## *Awakened Meaning*

Are you devoting your life to something you love? This card is the whispering of your soul to be in alignment with your divine work in the world. To allow yourself permission to do what you love and what you need to do. Often it takes more work and commitment than you expect to be on this path at times. Are you committed?

It is time to check in with your loyalty to your vision and to the people you keep in heart space. This also goes for your daily spiritual practice from the heart. Whether that is a devotion to your chosen deity or allowing space for your creative work.

Take some time to go back to the 'why' in relation to your path. Does it need correcting or altering in any way? Are you where you want to be? Or at least on the path towards it?

Devotion is living a passionate life. This can be as simple as just being who you really are and shining fully in the world. Don't be afraid to allow others to see what you are capable of.

## *Shadow Meaning*

Giving up when things get hard, misplaced trust in a teammate, letting people down, not following your purpose.

## *Affirmation*

'I bring an open heart to my work in the world'

## *Personal Reflections*

What areas in your life do you feel committed and devoted?

## *Dream*

Symbol - fireflies

Keywords - creation, dreaming, illumination,  
inspiration, dream interpretation



### *Awakened Soul Story*

*Our Awakened Soul is in a deep sleep in a field of light. She had been called to the garden, to dream with the night and the faeries. Inside her home she was feeling too constricted to allow her dreams to flow out into the universe. It is here in her secret garden that she can listen to her dreams more clearly.*

*The fireflies lit her path down to the garden and now they surround her in a fantasy-like glow. Fireflies glow from the inside out and it is only at night where their magic and illumination can be seen. They remind us that in the darkness there is always light and that even when times get hard, our dreams can be the hope that lights the way until we find sure footing again.*

*Our sleeping beauty knows the power of her dreams and that she can take flight and stretch her imagination, bringing back with her universal inspiration that she applies to her life.*

## *Awakened Meaning*

If you have had the Dream card arrive in your reading today you are being asked by your higher self to pay attention to your dreams. If you find it hard to remember your dreams set the intention before you go to sleep that you will remember them in the morning.

Now is the time to tap into your intuition daily, to practice and stretch those psychic muscles that can be of huge aid. While the signs may be small and quiet in the beginning, the more you use them the easier it becomes. Connect back to your inner guidance system.

Dreams are abstract, they require care and nurturing to become realised. They also need a lot of belief in self for practical actions to manifest. This is a reminder to work with all aspects of manifestation. To truly align yourself with your dreams you have to do the mundane work that supports your vision and believe in yourself. Even if you are the only one who does.

Find places, people and experiences that inspire you. Allow your imagination to soar. By opening the mind and allowing the space for fantasy and ideas you will tap into your creativity and your muses.

## *Shadow Meaning*

Daydreaming too often, escaping reality, abandoning your dreams, not listening to your intuition.

## *Affirmation*

'I remember and listen to my dreams'

## *Personal Reflections*

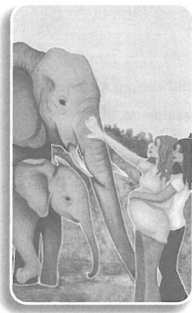
What dreams are important to you in this life?



# Family

Symbol - elephant

Keywords - unconditional love, tribe, community, kin, ancestors



## *Awakened Soul Story*

*Our Awakened Souls have found kinship in each other and in the beauty of the elephants that have graced them with their energy. They are bound together in the energy of motherhood, childhood, nurturing and oneness. All belonging to love and Gaia.*

*The elephants, also Awakened Souls, are not afraid of their human companions that they have come into connection with. They recognise that the energy of love is the bond that they share.*

*The expecting mothers show loving respect for the incredible gift and responsibility that having a family brings. They also know that they have a larger family here on Gaia and they have a duty to care and protect them as much as they can.*

## *Awakened Meaning*

Family can be a choice that you make. Choose people who are good for you and build you up with love and support. These people will also challenge and annoy you at times but ultimately they encourage you through their actions and words to be the best, most authentic person you can be.

You are being asked to see things, situations and people with unconditional love. We are all family here on Gaia. We are all in this together. Love and understanding is the way to divinity and peace. Tell the people that are your family that you love them, make time for them. Make them feel special and cherished.

This card is also the card of inheritance, the good and the bad. All of the things that come from our long lineage. There may be a need to show forgiveness, to work and break harmful cycles that have been carried down through generations.

If this card has come up in your reading today, you may be called to connect and work with your ancestors, to find more information about your roots and the power and knowledge you may find there.

## *Shadow Meaning*

Selfishness, walking away from family and community, moving away from family expectations (sometimes this is a wonderful thing).

## *Affirmation*

'I am worthy of unconditional love'

## *Personal Reflections*

How can you show more unconditional love for your family, chosen, given or both?

# *Forgiveness*

Symbol - open bird cage

Keywords - *absolution, mercy, freedom, unburdened, unshackled*



## *Awakened Soul Story*

**Our Awakened Soul is listening to the beautiful canary sing happily after being set free. She and the canary are connected in their joy as her heart is feeling light and free after finally forgiving things that have happened in the past.**

**The bird cage is a symbol of her body, mind and soul. When it was locked and shut down, she wasn't giving the gift of forgiveness and was trapped in the past, repeating her patterns. She was caged her entire life, unable to find happiness or peace.**

**Through an ultimate act of self-love, she has not only forgiven her past and the people that needed it, she also has forgiven herself. She is now truly free.**

## *Awakened Meaning*

It is time to give yourself permission to be free. There is no point in holding on to the past or to the wrongs, unfairness or trauma that reside there. You do not live or belong in the past. If you have been holding on to something for so long that it feels shameful or like giving up to let go, acknowledge that this is just the ego trying to keep you stuck and in pain.

Forgiving ourselves can be hard, but when it is done and accepted as a part of your spiritual work, incredible transformation can happen in your life. Forgiveness is an inside job and an outside job.

Come to situations through love and understanding, for when you do, forgiveness is easier to allow and takes less time to process. Be kind and gentle to yourself through this process and give yourself some grace. You may need to forgive people or yourself more than once.

See your future free from any harmful energies and memories of the past. Let go of those negative emotions and enjoy a light and joyful heart.

## *Shadow Meaning*

Blaming other people or yourself, holding onto a grudge, victim mentality, punishing yourself.

## *Affirmation*

'I am love, I forgive'

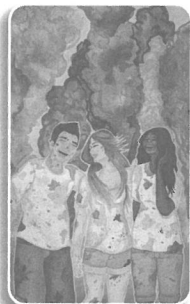
## *Personal Reflections*

Who needs forgiveness and what would that allow for me in my future?

## *Fun*

Symbol - color clouds

Keywords - laughter, joy, friendship, play, carefree



### *Awakened Soul Story*

Our Awakened Souls have just finished a color run together. Arriving at the finish line they celebrate with laughter within vibrant clouds of color. They are also celebrating with a larger community, adding their joyful energy to the event.

They are fully present in the moment, enjoying every second, even through the physical aches from the journey to the finish line. These friends raise each other up and encourage a space for fun and playfulness. Each person can be who they are without judgement.

The sound of music, laughter and cheering surround them doing even more to raise their vibration in the celebration of fun and friendship.

### *Awakened Meaning*

It is time to play! As an Awakened Soul you are sensitive to what happens around you. Life can get serious and heavy at times, demanding much of

your energy. Shake it off, be free and light. Seek out your idea of fun. Connect to your inner child and play the games you used to when you were young. Climb a tree or pretend to fly by jumping on a trampoline. Laugh until your belly hurts, eat food with your hands, play with your children, play dress up. Allow your inner child to express itself.

There is a huge healing power in fun. It refreshes your cells, gets the blood flowing and does wonders for invigorating your emotions and mind. Fun is whatever immediately lifts your mood and places you in the moment. It can be transcending.

When this card is pulled in a reading you are encouraged to engage in spiritual play - laughing yoga, hula hooping, ecstatic dance and anything that brings spirit into a form of joy.

### *Shadow Meaning*

Seriousness, dense and heavy energy, cut off from friends, denying joy.

### *Affirmation*

'I embrace fun in my spiritual practice'

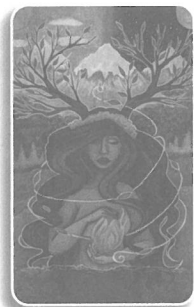
### *Personal Reflections*

What joyful fun can you seek out today?

# Gaia

Symbol - nature

Keywords - nurture, sacred custodian, connection,  
healing, self-care, motherhood



## *Awakened Soul Story*

We are all born on the same planet and on this living being we all pass. Gaia has been before we were birthed into this world and she will be long after we are gone. She is the living memory of all of the souls, civilizations, wars, languages, rituals, children, life and death on this planet.

Awakened Souls have a deep connection to Gaia, we know that the way that we treat our environment and the planet reflects how we feel about ourselves. We know that it is our duty to take care of her and the living beings that share this planet with us. We are her sacred custodians and we know that it is all connected.

The depiction of our Awakened Soul holding and being surrounded by the elements, deeply connected as one with them shows our connection with Gaia.

## *Awakened Meaning*

If you have received the Gaia card in your reading today you are being asked to nurture yourself in a deep way. Self-care can come in many forms but it has to be something that truly allows you time and space to feel refreshed and recharged.

You are being called to nurture the connection that you have with the sacred in your life, especially the sacred feminine. Take time to allow this space. This is the journey of the Awakened Soul being in alignment with the natural rhythms of life, the cycles of the seasons, the moon and the magic and natural wonder that we are gifted with.

This card is also a call to arms for the sacred earth warriors who are the protectors of the animals, children and all living things on Gaia. You are being asked to put your spirituality into practice and to be of service to others. Every little action helps. Every act of love and kindness creates positive change.

## *Shadow Meaning*

Disconnection, selfishness, harmful behaviour, littering, wastefulness.

## *Affirmation*

'I am deeply connected to healing myself and Gaia'

## *Personal Reflections*

What act of self-care can I carry out today?



# Gift

Symbol - the mermaids crown

Keywords - treasure, blessing, abundance, receiving, accepting



## *Awakened Soul Story*

Our Awakened Souls are seen in an exchange and a magical moment. The little girl is having her dream come true of meeting a real Mermaid. She will carry the gift of magic, belief in the wondrous and the knowledge that dreams do come true with her for the rest of her life. It will aid her in times of struggle and momentary doubt to keep going.

The Mermaid is in a vulnerable place letting herself be seen and connected with on the beach, instant kinship is formed. She gifts the little girl her sea priestess crown, her most treasured possession. While it is a gift of extraordinary value she knows that in giving to another she is also receiving.

This gift allows for a deep personal impact on the little girl who will champion the preservation of the oceans and the Mermaid's home. It will also keep her connected to her inner child every time she adorns it.

## *Awakened Meaning*

Did you know that you are the most valuable gift on the planet? The Gift card has arrived in your reading today to remind you of this message. The biggest gift you can give others and the world is to be who you really are, sharing your gifts, love, passions and creations with the world without filters or dimming your shine.

This card also represents a time of blessings coming your way and being received. Align yourself with this energy by staying open and grateful for the blessings in your life, being ever ready to accept more.

There is an art to receiving humbly and with graciousness. Often people find it easier to give than receive. This may be a sacred challenge to you. To accept more positive things in your life and about yourself.

Don't let anyone take your gift of belief and magic. Belief in your dreams, your spirituality, your work in the world and most importantly yourself. Keep the gift you were born with, an open heart.

## *Shadow Meaning*

Blocking abundance, ignoring your gifts and the gifts around you, self-doubt.

## *Affirmation*

'I am open to the gifts all around me'

## *Personal Reflections*

How can you embrace your gifts more?

# Gratitude

Symbol - heart chakra symbol

Keywords - recognition, respect, appreciation, thankfulness



## *Awakened Soul Story*

Our Awakened Soul has an open heart. She is sitting in appreciation, her aura of gratitude flows out of her into every person, living thing and situation she encounters.

She has opened her heart to the divine and accepted all of the blessings in her life. The rainbow of energy is light reflecting all around her. In this space she is peacefully joyful, calm, but excited all at the same time.

She knows that by aligning her vibration to gratitude she can navigate her life's journey in a more aware and abundant way.

## *Awakened Meaning*

This card is a reminder to appreciate everything that you have in life. From the large and obvious blessings to the smallest manifestations of abundance. It is a call to bring your energy into focus on what you have and not what society or others are telling you that you need.

Gratitude is being open to the good things happening in your life. It's not denying that life sometimes gets tough, but remaining in a place of appreciation for the good throughout these times. Being thankful for the challenges and opportunities to learn and grow is not always easy but it is possible and beneficial.

The law of gratitude is centered around the manifestation of the idea that the more you are grateful for you in your life, the more you show gratitude, the more you will have to BE grateful for. Even if it is only a few small things to begin with. Energy grows where you spend your attention.

Daily devotions of being grateful for each day, each meal, each loving person you come into contact with and honoring all life as being a mirror and essentially love are acts of gratitude.

### *Shadow Meaning*

Thankless work, underappreciating what you have, only seeing what you lack, searching outward.

### *Affirmation*

'I have a grateful heart'

### *Personal Reflections*

In this moment, what I am I grateful for?

# Grounding

Symbol - crystal grid

Keywords - ground, protect, recharge, stability



## *Awakened Soul Story*

Our Awakened Soul is in crystal heaven, lying in the middle of a large healing grid in the grass. She has crystals all along her main seven chakras on her body, connecting her to the rest of the grid, as she is the centerpiece.

After a long week of stressful work days, managing her relationships and keeping her sacred boundaries in place, she is in need of a grounding ritual to recharge and realign her energy. The stones are crystals of love (rose quartz) amplification (crystal quartz) protection (black tourmaline) and divine communication (kyanite).

In this space she is connecting herself to Gaia, allowing the light and energy to become centered. She breaths in light and breaths out anything that no longer serves her. She is going back to the source for transformation and healing.

## *Awakened Meaning*

If you have been feeling static around you or a heaviness that you cannot explain, this is a call to ground and centre your energy and stabilise your auric fields. You are constantly surrounded by waves of energy, natural and man-made. Anytime you feel foggy in mindset or distracted take time to cleanse and ground your energy. This helps with vitality, clarity and health.

You are drawn to this card today as a reminder to get your body in touch with nature. It has been too long since you were barefoot feeling the ground between your toes. Grounding can not only release negative and stale energy from your body it can allow for the vibrant energy of Gaia to return to your being. Go hug a tree, dive in the ocean, take a walk in nature without shoes. Take some time for an energy exchange with Gaia.

Overstimulation can cause you to experience a feeling of being burnt out or wanting to retreat. The simplicity of a grounding practice can offset these feelings.

While you can use tools such as crystals to aid in this work you only need yourself to ground.

## *Shadow Meaning*

Aloof, flighty, unable to feel through the static, overstimulated.

## *Affirmation*

'I connect to the charging energies of the earth'

## *Personal Reflections*

What warning signs does your body give you when it is time to ground?

# Guidance

Symbol - Tarot cards

Keywords - intuitive messages, advice, sageness, direction



## *Awakened Soul Story*

Our Awakened Soul is consulting her favorite and lovingly used Tarot cards for some much needed guidance about where she is, why she is stuck and what to do next. She knows that the Tarot is a reflection of her energy and can allow herself some much needed perspective. In reviewing the cards she checks in with her intuition to feel if the messages she is receiving resonates with her soul, knowing that this is her guiding compass above all else.

Over the years of study and learning she has formed a deep connection through the Tarot to her intuition and spirit guides. It is a constant journey and one where she has had many different mentors and guides along the path, knowing that they come and go when the time is right.

In her work as a Tarot reader when she reads for others she often receives messages and navigational clues for herself. In her daily reflections of her work, she allows her feelings to hone in on what is important for her to hear also. She is always open to guidance.

## *Awakened Meaning*

The Guidance card has arrived in your reading today as a call for you to find outside council. You might be too close to the situation and are too emotionally invested to be able to see clearly. Consulting an expert is the remedy of the day.

You are always being asked to listen to your inner guidance above all, no matter what your peers, spiritual teachers, institutions or sacred books tell you. You are the only one who knows what is right for you. Ego can get in the way at times and we can resist guidance when it means change but this is always a balancing act for spiritual people.

Activities and practice with your intuition and psychic development are also being brought to the surface of your consciousness. Time to strengthen those intuitive muscles and put them into practice. Explore and have fun with trying new techniques and tools. You must also learn to act on your intuitive hints and trust them. Action is faith in motion.

You may be called to find a spiritual leader or coach to get you to the next level when this card appears. Be open to new ideas and perspectives. There is always an element of letting go of some of your control when you open up your space to guide. Allow yourself this gift.

## *Shadow Meaning*

Ignoring the signs and messages, going off your spiritual path, denying council, false prophecy.

## *Affirmation*

'I am open and aligned to divine guidance'

## *Personal Reflections*

What kind of guidance do I need to be able to take my awareness to the next level?



# Healing

Symbol - heart

Keywords - feeling, acceptance, strengthening, recovery



## *Awakened Soul Story*

Our Awakened Soul is holding a family heirloom, a jewellery box, which has been handed down to her after the passing of a close family member. There are strong memories attached to this box for her. She is allowing herself to grieve. Fully feeling her emotions. She is not afraid to show that she is in pain and mourning.

The tears she is shedding help her release through the elemental magic of water. The heart on the jewelry box symbolises her own heart which is being allowed the space and time it needs to mend during this time.

She knows that this is all part of the healing process and that to deny herself this time will delay her ability to look back on her loving memories with happiness. It is also allowing her to live with an open heart, not giving the pain the ability to harden her heart.

## *Awakened Meaning*

Even though it may be hard at times you need to feel and deal to heal. Those emotions are powerful and feel consuming but they are the key to healing. Accept where you are and be gentle with yourself through the whole process. Take your time and seek out a helping hand or professional assistance if you need aid on the path to wholeness. Give yourself permission to feel the way you feel, without needing to apologise or take on a feeling of being a burden to others. Feeling is divine.

Healing happens on all levels, there is physical healing, emotional healing and spiritual healing. These are often all connected and complementary healing can assist with holistic wellness.

If this card has come to you in a reading today you are being asked not to expend too much energy on other people or projects. If you are going through some healing it is your right to have the time, space and energy for your process.

This card is also connected to healing relationships, situations and the past, which is powerful work when combined with the work of forgiveness and releasing.

## *Shadow Meaning*

Denial, repeating harmful patterns, addictions, projecting pain onto someone else.

## *Affirmation*

'I am open to healing and heal every day'

## *Personal Reflections*

What feelings am I being challenged to feel fully?

# Judgement

Symbol - chains

Keywords - projection, unsympathetic, shallowness, harshness



## *Awakened Soul Story*

Our Awakened Souls have been chained by their judgements of each other. They have been slowly throwing the chains of judgement around themselves and each other through their words, actions and thoughts. They have misplaced ideas about the other person and situation that they accept as truth, even without evidence or experience to back it up.

This damages each other, their communities and themselves. They are chipping away at each other and themselves with expectations and standards that are not realistic.

Beyond what they can see, they are being energetically bound by crystals that keep them stuck. In this they are unable to fulfil their purpose in life. They are unable to be the divine beings they are meant to be in this lifetime. They are only concerned with materialistic and shallow things; they are distracted.

## *Awakened Meaning*

This card means that there is judgement of yourself, others and or a situation happening that you need to consider. Judgements are natural but become detrimental when not acknowledged and seen for what they really are. You are being asked not to project what you feel about yourself onto others.

It is time to see the situation or person in a more balanced and fair manner, even if it's uncomfortable or you need an outside opinion or mediator. You are too close to a bias or emotionally involved to see things without the lens of judgement getting in the way.

You may be looking only at the surface of things and it's time to delve deeper. You may have misjudged what is going on. Find out the root cause of these judgements and why they are something you are carrying around with you.

Come back to your ability to find compassion, understanding and empathy. Misunderstandings and miscommunication can often become judgements if they are not addressed and cleared.

## *Shadow Meaning*

Gossip and vicious words, unfairness, ignorance, lack of reasoning.

## *Affirmation*

'I bring my judgements into the light of understanding'

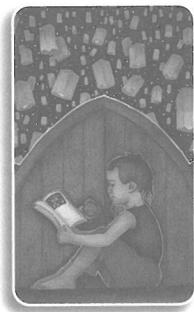
## *Personal Reflections*

Are you being overly judgemental in a situation or with a person at present?

# Knowledge

Symbol - book

Keywords - research, information, acquisition, education



## *Awakened Soul Story*

Our Awakened Soul is completely transported into a rich world every time he opens his precious books. He is absorbing everything he can and is engaging his imagination, stretching his understanding and perception. For him, study is not a chore it is a love and a privilege. The books are worth more than the paper they are printed on for the gifts they bring.

He will always adore reading and acquiring new knowledge. One day he will be a great teacher who shares his awareness and knowledge with others. Bringing this love of information and exploration to a new generation.

The lanterns that are in the book are projected in his mind as being free. They also represent all of the knowledge he possesses, lifting him higher and higher to new levels of awareness and intellect.

## *Awakened Meaning*

It is time for you to seek out more information, there is more to this than it seems.

This is the card of further education and subject specialisation. Learn something new or go back to the basics of what you know. There is always something to be gained from learning.

If this card has appeared in your reading today it is a call to research and check all of the facts before you move forward. Think critically when you are learning and gaining new knowledge, question and allow your intuition to guide you.

Find knowledge that resonates and speaks to your heart, and then share this knowledge with others. Light and understanding follows those who seek knowledge, they are able to dispel discrimination and misunderstandings and bring peace to situations.

## *Shadow Meaning*

Ignorance, intellectual superiority, unwilling to share your knowledge, only looking at things one dimensionally.

## *Affirmation*

'I am open to receiving and sharing knowledge and my role as a perpetual student'

## *Personal Reflections*

What do I have a thirst to learn about?

# *Labyrinth*

Symbol - the stone labyrinth

Keywords - ritual, journey within, illumination, opening the self



## *Awakened Soul Story*

Our Awakened Soul is on a journey, a walking meditation to realign herself and her path. There has been too much chaos and confusion vying for her attention. Too much outside noise has clouded her ability to hear her intuition.

The journey to this sacred space has prepared her in many ways for transformation. By taking herself out of her normal routine and space, she has shifted her perspective and allowed herself to be open to new experiences and realisations.

She is taking the time to call on her spiritual guardians, to be fully present and in her body. Each time she puts one foot in front of the other she walks into the centre, towards herself and wholeness.

## *Awakened Meaning*

It is time to rediscover yourself and your path. To take the time and make the commitment to shine a light on yourself. To be open to new truths about yourself. This may require you to do something completely new and to trust the process of transformation. The Labyrinth card is a divine call to walk your talk.

Know that you are aided through all of the transitions you will face in life. You are always supported, every step you take, even when you are not walking a spiritual path. You can't at all times, but the path will always be there when you are ready.

This card represents the greatest knowledge and journey that you go through in life - to know thyself. Dare to go on an exploration to the centre of your soul and to incorporate and embrace what you find there.

You are also being reminded to be present in your journey. To take time to be in the now and not rush through or want things to happen before you are ready.

## *Shadow Meaning*

Denial, being on auto pilot, not reflecting or being conscious, being lost.

## *Affirmation*

'I know myself'

## *Personal Reflections*

What requires realignment in my life?



# Leadership

Symbol - lion

Keywords - direction, initiative, shine, positive influence



## *Awakened Soul Story*

*Our Awakened Soul is a natural-born leader who is in a role of influence where her decisions and opinions affect many other people. While she has come to much of her leadership ability naturally, she has had to work hard to get where she is. She continues to learn from those around her, including the people she leads.*

*She is a role model, trailblazer, and philanthropist. This leader is open to learning new things and helping others in a positive way whenever she can.*

*She radiates confidence and shines that out to those who she influences and mentors. She is skilled at holding people's attention and a collective vision. Leaders show people what is possible, good leaders have the potential to make a massive impact on communities and the world at large.*

## *Awakened Meaning*

This card has come up in your reading today as a reminder that your actions and words dictate the type of leader you are. You are called to empower others and do what you say you are going to do. Not everyone wants to lead a huge team and that is perfectly okay, but there are many other ways you can be a leader.

Don't be afraid to shine with confidence in your abilities and skills. Cast any imposter syndrome you carry out the window along with your doubt. As long as you are working with integrity and heart, you are on the right track.

We gain loyalty through leadership. We gain respect through speaking up and standing up for what we believe in. Sometimes our true leaders are not those that we have been given in our institutions. You can be a true leader every day.

## *Shadow Meaning*

Compliance, shying away from praise, lacking confidence, lack of self-esteem.

## *Affirmation*

'I am a leader in my own natural way'

## *Personal Reflections*

In what ways am I being called to be a leader in my life?

# Magic

Symbol - lemniscate (the infinity symbol)

Keywords - creation, energy, manifestation, alchemy



## *Awakened Soul Story*

Our Awakened Soul is in her sacred space and has created a circuit of energy that is flowing in the endless loop of the lemniscate. Sparked from her hands, one of her powerful tools of manifestation. She has trained her mind to be able to see and feel magical energy as real as physical matter.

The alchemical symbols of the four elements are tattooed on her arm. She got the tattoos after initiation in nature magic.

Her ability to create, to shape her will, focus her mind and energy makes her the creator of her reality. She knows how powerful she is, how her words, thoughts and actions shape her reality. She also knows that magic is in all things and is for all people. Even the smallest actions can carry powerful magic.

## *Awakened Meaning*

Magic has arrived in your reading today as a reminder that you have the power to change your path when things aren't where your heart desires. You do this through the thoughts you have and the choices you make. This coupled with magical workings can change your life. No one else is more invested or able to create this change than you.

Energy manifests in so many different ways. All things are divine and all things are magic, you have this gift inside you already. You do not have to be born into a magical family or ancient lineage to claim your personal magic.

Rituals, wishes, prayers and spell craft are called for at this time - however you choose to practice divine magic in your life.

This card also represents taking responsibility for where you are and for the future you create. Personal responsibility is one of the very first steps to a healthy and dynamic magical practice.

The final message of this card is that magic is everywhere, if you are open to it and look for it.

## *Shadow Meaning*

Giving your power away, allowing others to choose for you, wasted potential, scapegoating, stuck in the mundane.

## *Affirmation*

'I am a divine creator and manifest my desires with ease today'

## *Personal Reflections*

Where can I find more magic in my everyday life?

## *Mantra*

Symbol - mala beads

Keywords - affirmation, consciousness, inner voice, alignment



### *Awakened Soul Story*

*Our Awakened Soul is deep in meditation and contemplation. She is watching her inner dialogue, the running voice of her mind, from a peaceful perspective. It's in this state that she can detach herself from emotions and triggers and see them for what they really are.*

*By taking the time to view her thoughts and contemplate their power in her life, she can choose what she allows in her mental and energetic space. She is using her mala beads to repeat her affirmations to align her mental state with the vibration to create the life she wants.*

*This is a practice that requires time and dedication, and she has made it a daily habit that has served her over the years.*

## *Awakened Meaning*

It is time for you to bring your consciousness to your inner dialogue. Too often we allow too many limiting thoughts to dwell in our mind, which is the starting place for manifestation. During this practice it is key not to judge yourself for what you may hear yourself saying. Practice changes things over time.

You are being urged to use positive and kind words when you think about yourself and when you talk about yourself. This also goes for how you choose to speak about other people. Often it is much easier to see the negative, rather than the positive.

Words have power, they are creators. Even though it seems simple, when you harness this, it can radically change your life and the way you view yourself, your situations and other people.

This is a call to use your affirmations and positive mantras daily. Align your daily routine to support these affirmations so that manifestation becomes a fluid and constant result.

## *Shadow Meaning*

Negative self-talk, being unaware of your thoughts, being harsh with your words.

## *Affirmation*

'I align my words to create a positive reality'

## *Personal Reflections*

What are some of the ways you can use words more positively in your daily life?

# Meditate

Symbol - mandala

Keywords - stillness, peace, contemplation, reflection



## Awakened Soul Story

Our Awakened Soul is in a deep meditative state. She is radiating peace through her acts of contemplation and stillness. It is a mental and emotional sanctuary that she can access anywhere. Over the years of her practice she has seen her thoughts become clearer, calmer and has given her more patience.

Through this daily space for meditation she has made healthier decisions, felt less rushed and is sleeping more soundly.

She is sitting on a mandala meditation mat that she lovingly created. She works with mandalas as an active and creative meditation.

## Awakened Meaning

If the Meditate card has arrived in your reading today, you are being asked to give your decisions some careful consideration before you

make a decision and move ahead. Look at things from a more detached perspective and allow yourself to see it from an unbiased angle.

You are being asked to quiet your mind, shut out all of the distractions and voices that are asking you to listen to them and hear the call of your own inner voice. Find contentment through the practice of silence and stillness.

If you are feeling drawn to this card a form of relaxing meditation added to your spiritual practice may aid you in ways you have not yet considered. In our busy world, it is a supreme act of self-care to take time to find inner peace.

You may have been burning the candle at both ends. Take this as a sign to recharge your energy and take care of your mental health.

### *Shadow Meaning*

Neglecting self-care, making rash decisions, confusion, mental clutter.

### *Affirmation*

'I promote peace in my life'

### *Personal Reflections*

What form of meditation would most benefit my life and spiritual practice?



# Mirror

Symbol - the mirror

Keywords - reflection, love, acceptance, projection



## *Awakened Soul Story*

Our Awakened Soul has woken this morning and looked into the mirror, the same as she has a thousand times before, however today it is like she is seeing herself anew. She had a powerful dream where her reflection gently places a hand on her face, smiled and said 'I love you' in a way that had her wake with the tears of appreciation and love in her eyes.

Now looking into her own eyes she sees that all life is a reflection of how she sees herself. That to truly love, she must fully love herself. She understands she is not perfect and shouldn't try to attain someone else's ideal of perfection. She accepts that she is perfectly imperfect and that she is worthy of love all the same, as are you.

Casting away all negative thoughts and projections about herself, she is no longer going to shy away from mirrors, photos and being seen by people for the amazing Goddess she is.

## *Awakened Meaning*

This card has come to you today with the message of the change that you want to see in your life, relationships, with money, people, family, lovers, friends and in the wider world all come from the relationship and the way you view yourself.

Your relationships are your greatest teachers. People often mirror back your fears, judgements and projections. They can also reflect back your love, joys and hopes. What are your relationships reflecting back to you today? Are you open to seeing it? Seeing yourself in that reflection? When you accept this and work on shifting the energy into a loving one, everyone feels this. Life changing changes can happen.

This card is also a call to take a look at the standards and expectations you are placing on yourself and others. Are they coming from a place of love? Or are you accepting the status quo as gospel? See these through love.

This card comes with a special song, 'The Man in the Mirror' by Michael Jackson, the song came in so loud and strong when this card was born. It all starts with us. All of the love and positive change.

## *Shadow Meaning*

Negative or harmful projections, not taking responsibility for your life, judging yourself and others, not really seeing yourself.

## *Affirmation*

'I love myself, I forgive myself, I accept myself'

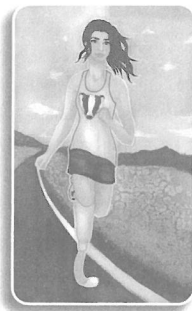
## *Personal Reflections*

How can I reflect and shine love to the people in my life?

## *Perseverance*

Symbol - the badger

Keywords - fortitude, stamina, endurance, staying the course



### *Awakened Soul Story*

Our Awakened Soul could have given up many times in her life. She could have chosen to allow the loss of her leg to become her defining story. This would have kept her stuck in the past, resentful and unable to fulfil her highest potential in this life. Instead she is back doing what she loves, running.

It has been a long road and she has taken the badger as a personal mascot as they hold the meaning and message of perseverance. Anytime she felt that her recovery was too much, she envisioned herself on the open road running, a true joy in her life.

Through this journey she has learnt that she is capable of anything and no longer lets anything hold her back from pursuing her goals. Perseverance has given our Awakened Soul her love of running back and it has also seen her grow in ways that even she didn't anticipate.

## *Awakened Meaning*

The Perseverance card has called to you today to remind you that you have more resourcefulness, ability and potential than you may ever even know. It is kindly asking that you stop limiting yourself because of what has happened in the past, your fears, what other people think of you, or what you can and cannot do. Dig deep, push through the limitations you have placed on yourself.

If you have been looking for a sign to keep going, this is it. The doubt that may have started to seed is just your fear testing you. As long as it is safe for you to continue, keep going.

Don't allow your current circumstances to dominate or be THE thing in your life. It doesn't have to be what defines you or have your energy and attention. Separate yourself from the people and the situation to get some perspective. What is happening is either a challenge, an opportunity or an obstacle. You choose.

Look for creative solutions and resources to move you forward. Think outside of what you have previously considered. Life is a long game, don't just think small and for the short term.

## *Shadow Meaning*

Giving up, only looking at the problem, giving your power away, feeling helpless.

## *Affirmation*

'I am never given anything I cannot handle'

## *Personal Reflections*

In what areas of my life do I need more perseverance?

## *Perspective*

Symbol - paintbrush and paints

Keywords - outlook, point of view, stance, depth, attitude



### *Awakened Soul Story*

*Our Awakened Soul is bringing her art into being, and also becoming her art. She is using her skills and tools to show her perspective to the world. She is the art, it is part of her soul. Art challenges people, both the creator who conceptualised and gives loving time to see the piece come to life and each person who brings their own interpretation to the work when done, either positive or negative.*

*She has used many different approaches and mediums throughout her career. Each one bringing her joy, teaching her new ways to see art and adding to her toolkit.*

*She knows as an artist that there are many ways to interpret any piece, or situation. Even though putting her work out into the world can be an act of vulnerability, she knows that her value is not held by other people's point of views.*

## *Awakened Meaning*

The Perspective card is asking, are you the painter or the observer? Are you the consumer or creator? It is much easier to judge someone else's work than it is to create. You are often both in your life so remember the other side of the coin in your current situation. There is always more than one side to the story.

It is time to check to see if your past, beliefs or prejudices are influencing how you are viewing this situation or person. While we all have a certain lens we see life through, it can begin to skew our objectivity.

What you have been doing so far has not been working. It is time to look at things from a wider viewpoint. Tackle the issue at hand from a different approach. Have a flexible way of being when it comes to solutions and creativity. Too much control kills creativity.

Can you find depth where you think there may be none? Look beneath the surface and don't take things on face value. Put yourself in someone else's shoes. How does it feel and look now? Remember when you change your attitude, you change the outcome.

## *Shadow Meaning*

Seeing absolutes, unable to see potential, unwilling to change, narrow view point.

## *Affirmation*

'I am open to new perspectives'

## *Personal Reflections*

What experiences may be currently influencing your attitude?

# Rebirth

Symbol - bat and cave

Keywords - death, birth, renewal, beginnings, transformation



## *Awakened Soul Story*

Our Awakened Soul has just completed a ritual of cleansing and rebirth. She has spent time shedding the old and will only take what is still healthy for her into the future. Old habits, beliefs and relationships have shifted and are being left behind.

As she emerges from the cave, a symbol of rebirth through Gaia, she breathes in the warm air. She can barely see the New Moon in the sky, but she knows that this cosmic time also supports her beginning again. She is now manifesting and setting her new goals.

A bat flies out of the cave, a symbol and animal kin of rebirth. This guide will be with her in her meditations during this time of transition. Now that she has created space in her life, she knows to resist the urge to go out and fill it up again with distractions and things. She is taking her time when it comes to adding anything into her life.

## *Awakened Meaning*

There is a time of new beginnings around you. You may have felt the stir of this energy or had clear visions that change was on the way. This may require you to walk away from things that you have gotten used to and attached to. Are you willing to walk away free into your future?

This card is a reminder to take the time to allow for cleansing, healing and rebirth in your spiritual practice. This can be done through cleansing, sweat lodges, a rebirthing session or regression or soul retrieval. Feel what is right for you at this time and for your further development.

If you feel like you have been pushing a boulder uphill this is a sign that a new beginning is needed. You are not being asked to abandon what you have put your energy into but to be open to something new and better arriving.

No matter what is going on around you, a new beginning or fresh start is on the horizon. This can be in any area of your life. You are currently in a time of powerful transformation. Embrace it, the more open you are, the easier you will incorporate this change.

## *Shadow Meaning*

Clinging onto the old, denial, unwilling to let go, decay, endings and being left behind.

## *Affirmation*

'I trust in my ability to start anew'

## *Personal Reflections*

What no longer serves you well in your life?



# Release

Symbol - the grackle bird

Keywords - liberation, freedom, empower, clearing



## *Awakened Soul Story*

Our Awakened Soul has nursed the common grackle bird that is in her hand back to health after finding it in the snow. The grackle is the messenger of releasing emotional hurt from the past. She has put many weeks of time and love into healing this little bird. Although she has grown attached to the bird she knows it is time for the bird to return to the wild.

She has taken her time to walk into the woods with the bird early in the morning and now holds her hand open for the bird to fly away when it is ready. The bird sings a song of gratitude and happiness knowing that it is now free and can seek its flock.

While there is now a hole where the bird used to be she knows that this experience was a gift and the bird is back where he belongs so she is also free to move forward. She has learnt the power of letting things go when the time comes naturally.

## *Awakened Meaning*

The Release card calls for you to examine what you are holding on to. What do you fear letting go of and what is holding you back? When you miss the organic opportunity to release what no longer serves, you hold yourself back.

Release these things, people, relationships, habits, beliefs or situations with love and forgiveness. This release needs to be done on a deep level, which can take some time and may take more than one attempt. Be kind to yourself during this transition.

Understand that things change no matter how you feel about it or even if you feel ready. If you can allow it to be what it is, it does not have power over you. These releases allow for room for the new to come in, for better opportunities to come to you.

Letting go can be a painful experience, allow yourself the time and space to grieve if you need to. Once you have moved through the pain, you can then pay tribute to what has happened and hold the memories in a healthy way.

## *Shadow Meaning*

Holding on too tightly, control, dominance, capturing.

## *Affirmation*

'I release what no longer serves me'

## *Personal Reflections*

What do I need to release?

# Rescue

Symbol - outreached hand

Keywords - help, assistance, vulnerability, acceptance



## *Awakened Soul Story*

Our Awakened Soul is deep underwater, holding her breath and looking up for aid. She is reaching out to the hand that she sees in the water, hoping that she will be lead to fresh air.

She needs help to be pulled up towards the surface, to break free of the heavy water. The air and light is calling her. She knows that when she is free of the water she will be able to move with more ease.

Trusting another to give her the vital assistance she needs has put her in a vulnerable situation but it is in this act of faith that she finds another side to being a strong person. She is so used to doing everything on her own and being there for everyone else. This turn of events, where she is the one in need, is teaching her humility and the gift of being open.

## *Awakened Meaning*

If you have had the Rescue card arrive in your reading today you are being asked to assess the areas of your life where you could benefit from some outside assistance. Admitting that you require help, owning it and being brave enough to ask and accept help are a big part of your spiritual journey.

You could also be currently surrounded by heavy energy. You may be over committing and doing too much for everyone else. Check your pride and if you are needing to be needed. If you're feeling like you have no time and too much to do, it may be time to delegate or set boundaries.

Accepting help and receiving aid is a spiritual act. There is no shame in this. Alternatively, you may be being asked by this energy to lend a helping hand to someone else. Sometimes this is obvious but other times we need to tune in to our intuition and feel if there is a place we can help.

It is never a bad idea to ask those around you if they are okay. It may be the catalyst they need to shine a light on their own pain.

## *Shadow Meaning*

Being a martyr, hiding your pain, looking to others to save you all the time, having a rescue complex.

## *Affirmation*

'It is safe for me to accept help'

## *Personal Reflections*

How can I be more comfortable with receiving aid?

## *Sanctuary*

Symbol - cup of tea

Keywords - peace, tranquility, recharging, self-care



### *Awakened Soul Story*

How much do you want to be our Awakened Soul right now? She sits completely comfortable with her own company and that of her cat. She is surrounded by sacred tools, her favorite books and tarot decks. She is recharging in the inspiring view and knows that she can take sanctuary outside in nature as well.

Sanctuary for her is any place where she feels safe, where she can enjoy things in her own time and terms. She enjoys her simple rituals, like a cup of tea and a book and the space that silence allows her.

She has given herself the gift of time and the space to recharge. She can gather her thoughts and find her inspiration again. It is a space she can come to any time she feels burnt out by the world or out of touch with herself.

## *Awakened Meaning*

The Sanctuary card is asking that you give yourself some grace and space. If you pressure yourself to be constantly productive and achieving you may feel guilty allowing yourself downtime. Allow that guilt to go bye, bye.

When was the last time you spent time creating sacred space for yourself? Life can be a little bit like a battlefield at times. Creating sanctuary in your home and with the people you love is so vital to your emotional, mental, physical and spiritual health. You may find rituals, being out in nature or aligning the energy of your home is enough for you.

Your relationships and other Awakened Souls can also be sanctuary. Can you create an intentional space of retreat in your home for yourself and the people you love? Can you leave all outside worries and stresses at the door and support each other in your journeys?

Nature is a temple - a swim in the ocean or a hike in the woods may be the best way to recharge.

## *Shadow Meaning*

Stress, over activity, depletion of energy, being around shallow or destructive people.

## *Affirmation*

'I allow myself time and space to recharge'

## *Personal Reflections*

What would the ultimate sanctuary look and feel like to you?  
(Make a vision board to manifest this!)

# *Sensuality*

Symbol - burlesque feather fans

Keywords - sexuality, pleasure, evocativeness, tactical



## *Awakened Soul Story*

*Our Awakened Soul is a confident and sexy burlesque performer who has connected with her sacred power by adoring her body and sexuality. She knows that burlesque has given her the gifts of fun, dance, confidence and self-love, as well as a community that embraces these things.*

*She performs for herself because she adores feeling playful and feeling sensual. The feather fans entice and add extra energy to the performance. They also make her skin feel alive while she is on stage. She does not shy away from all of the lumps and bumps she has as these add to her personality.*

*The rich red in her corsetry connects her to the power in her root chakra, the color of life and sex. The stage lights represent the power in loving who you are and sharing that with the world. You don't have to be a burlesque dancer to do this, this is her own way of being in her power.*

## *Awakened Meaning*

The Sensuality card is calling for you to express your sensual side. Tune into your body, the amazing physical temple that you have been gifted in this life. Find and foster a genuine sensuality and sexual energy within yourself without manipulation or exploitation of others. This is sacred sensuality in practice. Align your sexual power to the sacred and divine.

This is the ultimate body love and body appreciation card. Give yourself permission to be comfortable and love your body, other people or social standards be damned. You are beautiful. You are powerful and you are worthy of love, sensuality and adoration.

Take some time to release any shame you may have around your sexual desires. We all have deep sexual fantasies. There is no need to feel guilty as long as it is safe, consensual and harming no one.

If ever there was a call to feel pleasure this is it. It is time for some decadence and indulgence. Not that every day has to be one of indulgence, but every now and then it is good for the soul. You can take pleasure in the simple things - grass under your bare feet, the feel of clean sheets or being covered in a warm bath. It doesn't have to be extravagant to be powerful.

## *Shadow Meaning*

Shame and guilt around sexuality and pleasure, overindulging, using sex or your sensuality as a manipulative tool, withholding.

## *Affirmation*

'I feel safe and sensual in my own skin'

## *Personal Reflections*

What allows you to feel sensual and empowered?



# Shadow

Symbol - mask

Keywords - ego, subconscious, denial, suppression, hidden gems



## *Awakened Soul Story*

Our Awakened Soul stands in front of a mirror that is adorned with the phases of the moon, the controlling heavenly body of our inner waters. She is hiding under a full cape and mask. She could be anyone. She is embracing the hidden nature of our shadow side, allowing what is underneath to come forward.

She holds a candle to give her the ability to shine light on the darkest of places and also in the corners of her mind and soul that are often suppressed, only coming up in dreams and whispers. Light can also create shadows, which reminds her that the work of self-integration never ends.

She knows that she has the power to incorporate her shadow side by embracing it. This spiritual work will be a theme throughout her lifetime. The hard times in her life, the dark night of the soul, times of grief and loss have all been times of great transformation and healing where she has learnt much about herself and what is truly important. She knows the power of the shadow side and darkness.

## *Awakened Meaning*

There is nothing to truly fear in the darkness, unless you are unwilling to really know thyself. You are being challenged to do some shadow work and look at those things that you hold fear around.

Even as a spiritual person you are still a human, it is okay to have flaws and to have parts of yourself that are not perfect or integrated. Own your fears, name them, write about them. Find out why they trigger you. When you find out why, your ability to let these fears go increases. Ignorance is fear's best friend.

This is the card of illuminating your subconscious and all of those messages that are lying underneath. The hidden motivations, dark desires and things long forgotten. Working with lucid dreaming, past life regression, deep meditation and soul retrieval are all types of work that can aid you as you work through this.

Shadow work is ultimately about knowing yourself, which is work that never ends. Asking questions is a good place to start.

## *Shadow Meaning*

Denial of the hard stuff, hiding your pain, not doing the work needed, ignorance.

## *Affirmation*

'I illuminate and accept my shadow side'

## *Personal Reflections*

What fears do I hold around embracing my shadow side?

# Shapeshifter

Symbol - white wolf

Keywords - instincts, illusions, deception, camouflage



## *Awakened Soul Story*

Our Awakened Soul is on the alert and for good reason. Something doesn't feel right. She is in a crouched stance that allows her some cover, but also the ability to spring forward and move quickly if she needs to. She has been on the road for some time and has learnt to listen to her instincts when they tell her to pause and listen before moving ahead.

The white wolf, her guide is howling in warning. He is the spirit manifestation of her pure instinct telling her to be cautious. This spirit guide has been with her her entire life and is her constant companion.

She is shielded by a red cloak for power, security and protection and is wearing practical travelling gear and footwear underneath. Her wellbeing and survival mean more to her than all of the pretty things she left behind. What is she in search of? You determine that.

## *Awakened Meaning*

The Shapeshifter card has come up in your reading today to tell you what you already know, something is not what it seems. You need to look beyond the surface. Do what our Awakened Soul is doing, pause, step back and listen. The red flags have been there, you can no longer ignore your gut instincts.

Be on alert for people or situations that may try to tangle you in their drama and issues. This is the card of the trickster. Those who act like chameleons changing who they are and what they want to try to come out on top.

If you are able to listen and be guided by your instincts, take action when you know you need to, instead of looking back in hindsight, then this card takes you from being the hunted to the hunter.

You are truly in your power when you have lived in alignment with your feeling, intuition and instincts. It is a true gift to listen, to know when to act and when to stay still. To allow opportunities and people to pass that may be 'shiny' but are not aligned with your highest good.

## *Shadow Meaning*

Lies, deception, fraud, breaking of contracts or agreements, delays in projects, cheating.

## *Affirmation*

'I am connected and listen to my instincts'

## *Personal Reflections*

What signals does my body give me when I need to pay attention?

## *Silence*

Symbol - the locked door and keys

Keywords - observation, perception, listening, poise, space



### *Awakened Soul Story*

Don't expect much of a conversation from this Awakened Soul. She is more adept in the art of listening and observation. She loves her quiet time and space in her garden where she can listen to nature and just be. Looking over her shoulders, she has long heard you coming.

She holds in her hands a set of ancient keys. These not only open the door in the background to a place of spiritual significance (what is behind that door? Journey with the card and find out) but they also represent all of the knowledge she has acquired by truly listening.

This also includes secrets that she has found and kept over the years. Her awareness of when to put something under lock and key is a huge strength of hers.

## *Awakened Meaning*

It is a simple concept, less talking and more listening. That is what you are being asked to do if you have pulled this card today. Really listen with your whole being. Take it all in. Be aware of your surroundings, your body's reactions, listen to nature and your inner voice.

Knowing the right time to talk and the right time to be silent will serve you very well. Will what you want to say add anything positive to the conversation? What are your motivations around speaking? These are some of the things that you can consider. Silence can sometimes be all the answer or response you need.

Silence can challenge many people. Some feel the need to fill it with noise, no matter what it is. Some need to leave and find distraction. Others have a physical reaction to silence, when people don't talk in a conversation or argument it can make the other party nervous, why do you think this is? Can you become comfortable with silence? Even better, can you embrace it?

The other side to this card is that you deserve to be heard and that people shaming you for speaking up or speaking out is more about them than it is about you. You have every right to your space and for people to pay attention to your ideas. Don't allow anyone to shame you for this.

## *Shadow Meaning*

Gossip, spying, not standing up for yourself or speaking up, fear of speaking up.

## *Affirmation*

'I know when silence is all that is needed'

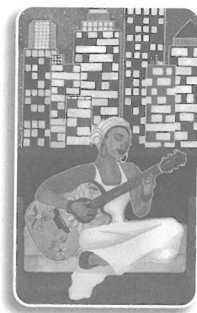
## *Personal Reflections*

How can I embrace more silence in my spiritual practice?

# *Simplicity*

Symbol - guitar

Keywords - clarity, clearing, decluttering, rising above, keeping it simple



## *Awakened Soul Story*

We see our Awakened Soul at night above a busy, noisy city enjoying the music of her soul. In this moment she has risen above the noise to find divine music. Her hand painted guitar is one of the small number of personal items she owns. With a bard's soul she likes to move around to different countries and cities so owning minimal possessions serves her lifestyle. A simple, happy and full life.

In living simply she has shed many of the things that were weighing her down. From physical items to ideas that were not hers to begin with. The travel she has done has opened her mind. She has seen people with so little live so fully which is a humbling reminder of all that she has.

Her songs allow her to put her thoughts on paper, to order and declutter her mind in a beautifully creative way, keeping her inspired and inspiring others. The messages in her music touching all that hear them to look within and find contentment.

## *Awakened Meaning*

The Simplicity card has come to you today as a reminder to keep it simple. There is no need to complicate things. Keeping busy can distract you from what is really important or going on underneath the surface. This is all just delaying what will happen anyway.

This is the card of keeping on track, avoiding distractions and rising above the need to make things harder than it needs to be. If you are becoming distracted come back to the 'why' of your work and the source of your motivation to get you back on track.

Sometimes the simplest solutions are the best. Looking at a situation through the eyes of a child is a good exercise. Stating what 'is' and not what you think, or the story you have around the situation or person is also powerful.

Find joy in the little things in life. They can be easily passed over but can be profound if you pay attention.

Clear your mind by decluttering your space, or delegating some of your workload, or taking time to reassess your current situation.

## *Shadow Meaning*

Consumerism, complications, business, little progress, difficulty.

## *Affirmation*

'I see the magic in simplicity'

## *Personal Reflections*

In what areas of my life could I use some simplicity?



# Solitude

Symbol - lone fox

Keywords - withdrawal, independence, privacy, detachment



## *Awakened Soul Story*

**Our Awakened Soul has decided that she needed some time alone outside in nature. While the party rages on indoors, she sits quietly by the campfire after recognizing the signs of feeling emotionally drained. She has stepped away from the crowd to get some space to reconnect and renew her energy.**

**A fox watches our Awakened Soul and recognizes a kindred spirit. Neither one threatened by each other, both allowing the other one their space.**

**Under the expansive night sky, in the peace and quiet, our Awakened Soul can reflect, meditate and commune with nature. She can take all the time she needs. Giving herself the gift of recharged batteries and renewed energy for life.**

## *Awakened Meaning*

This card is asking that you put some space between you and other people, their agendas, biases, opinions and expectations, for a while. Get to know your own beliefs and find your own path without outside council.

Make your own decisions and live your own life, as you see fit. Do what is right for you, as long as it is harming no one. You have the strength to stand on your own, be independent and forge your own path. Why else would you be here?

It is a time of withdrawing from social events, social media (which can be all consuming if you let it) and embracing your introverted side. There is no shame for needing peace, quiet and your own company.

If you have been in hermit mode for a while, this card may signify that your time to reconnect with others is coming. If you feel loneliness or isolated, please know that there are people who care for you and reach out for connection. Reach out to the Awakened Soul community, we always welcome and support kin.

## *Shadow Meaning*

Living someone else's life, co-dependency, too much going on, energy depletion.

## *Affirmation*

'I am supported and loved, even when I am on my own'

## *Personal Reflections*

What can being alone teach me about myself?

## *Song*

Symbol - Tibetan singing bowls

Keywords - vibration, music, voice, chant



### *Awakened Soul Story*

Our Awakened Soul sits with the Tibetan singing bowls, which have been used for hundreds of years in spiritual practice as either a sign for the start and completion of silent meditation or for use while chanting. They are powerful tools for healing and vibrational alignment using sound and can be used for charging other tools as well.

She is mid-song, closing her eyes to allow her body to feel the vibration of the music go through her. The red cardinal outside, a famous songbird (where both the female and male bird sing) joins our Awakened Soul in her spirited song.

She does not worry about others hearing her because she shares her song from a place of an open heart. She knows that song is a wonderful and instant way to raise the vibration of a person or room. Her song has been her greatest gift of healing.

## *Awakened Meaning*

Everything can be a song if you let it. You can bring music, chanting and melodies to nearly any situation. It is a powerful expression. You have drawn this card in your reading as a reminder to sing in the car, shower or wherever you feel comfortable to help raise your vibration and the vibration of the space that you are in. Why not bring a little Disney musical into your life?

You are called to embrace your song. Who cares if you cannot sing on key (many incredible, legendary performers sing off key) or never know the right lyrics. It is not about being perfect, good or right, it's about JOY, which is infectious. You don't have to be a perfect musician to connect to the power of song and music.

This is the card of exploring the art of music therapy and sound healing. Research your local drumming circles, go to a gonging meditation or sound bath. Chanting, writing lyrics or music can also be exceptionally healing.

Song can be a way to build power in ritual and may be just what is needed to aid your manifestation work.

## *Shadow Meaning*

Fear of embarrassment, disconnection from your voice, silence, dense energy.

## *Affirmation*

'I embrace my unique song'

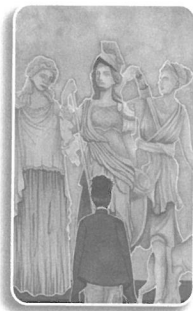
## *Personal Reflections*

How can I bring more song into my life?

## *Sovereignty*

Symbol - the 'Virgin' Goddesses

Keywords - authority, power, royalty, jurisdiction



### *Awakened Soul Story*

Our Awakened Soul stands in awe of the three 'virgin' Goddesses of ancient Greek mythology. Athena, Goddess of wisdom and strategy; Artemis, Goddess of the moon and the hunt; and Hestia, Goddess of the home and hearth. She can see herself in each of these powerful divine feminine ones. Through connecting to their energy she is inspired to claim her own life and power.

These Goddesses weren't all about chastity, they claimed the word "virgin" as being a woman who no man or God can own. They made their own choices and had the power over their own lives.

It has been a long journey for our Awakened Soul to come to the place of owning who she is and her place in the world. She has had to define her purpose and has often left the comfort and security of the known to seek out her own path. Today, as she stands in this temple, she knows it has all been worth it as she undergoes an initiation of self.

## *Awakened Meaning*

The Sovereignty card has arrived as a sign from the divine within you to own your power and if you have been giving it away, to take it back. You may have given your power away by allowing other people to make decisions for you, seeking approval over being happy and not having clear boundaries.

These Goddesses are a reminder that no one but you has the right to say anything about your life and the choices that you do and don't make. They are yours and no one else's. Give yourself permission to be yourself.

You are being reminded that through spiritual work and self-love you can claim your power every day for yourself. Regardless of your gender identity, race or spiritual path, you are divine.

Even if you are part of an organised religion or spiritual group, you still have the right to choose what is right for you. Check with your inner compass whether you are aligned to love. Sovereignty is taking responsibility for your actions and life, as you are the one who has the power.

## *Shadow Meaning*

Giving your power away, seeking approval, unwilling to take responsibility or decide, untapped potential.

## *Affirmation*

'I claim my sacred power now'

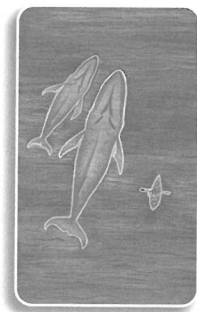
## *Personal Reflections*

How can you reclaim or reconfirm your personal power?

# *Surrender*

Symbol - whales

Keywords - acceptance, relinquishing control, awe, yielding



## *Awakened Soul Story*

Our Awakened Souls, who are sea kayaking with two very special animal kin have had a realization of divine surrender today. The whales have come to them as a messenger and sign of grace and acceptance.

Whales hold powerful energy, they are the living memory of the planet. They live in open water and travel great distances every year. The openness of the whale reminds us to surrender. When we surrender like the whale we can go with the natural flow of things again.

Our kayakers can only see from a certain perspective, from the surface down, and only what the available light will let them see. They have very little control over what happens in the expansive environment that they are in.

## *Awakened Meaning*

Today you are being asked to gracefully hand over the need to control the path and outcome of the situation. This can be hard especially when you

have invested so much. When you try to control you put up blocks. When you relinquish control you create space for things to move again. If you are able to give it over with grace, ease soon follows.

This card also holds the message of accepting where you are. It does not serve you or others to deny where you are. When you accept and give up your projections or illusions you can move forward. Are you being challenged to give something up to a higher power? How does that challenge you? Allow something outside of yourself to bring you miracles.

Surrender is also allowing yourself to be totally present in the moment. To be open to feeling powerful emotions, to being in awe of the majesty and magic around you. Surrender to the way you feel completely, surrender to love.

For those of you who crave freedom, this is a powerful card. The more you can work to loosen the grip you have of the journey and outcome, the more free you can be. Trust that you are going to be provided for and that good things will consistently happen to you and they really will find a way to become reality.

### *Shadow Meaning*

Control, fear, lack of trust, worrying about the outcome or future, manipulating the outcome.

### *Affirmation*

'I surrender'

### *Personal Reflections*

Do I trust that the universe has my back?



## Treasure

Symbol - sea shell

Keywords - exploration, riches, attention, fortune, seek



### *Awakened Soul Story*

Our Awakened Soul has come to this tidal rock pool close to her home since she was a little girl. Every time she comes to this place she is reminded of the richness of life that lives in such a small area. She carefully watches every creature in the pool, examines the shells and picks out a beautiful piece to take home for her altar, carefully checking no animal has already claimed it for their home.

These pools are hidden for most of the day and night. There is only a small window of opportunity for their beauty to be seen. It is a protection that many of the animals that call these pools home rely on to survive. Sometimes treasure needs to be hidden.

Our Awakened Soul has combed this beach so many times it feels like a second home. She is always finding little jewels. She knows that to find these pearls she has to seek them out, they are not just going to come to her. Her keen sense of observation has always seen her lucky in the way of abundance. This is often the way with people who pay attention.

## *Awakened Meaning*

You have pulled the Treasure card today as a call to paying attention to details and the little things. It is worth it. Go over things with intention, even though it will take more time. This attention needs to be given when you are walking, driving and talking. No more auto pilot.

This card is also a reminder that the little things, the small, the hidden, the hard to find, hold just as much magic and meaning as the big, loud and obvious. Seek out the good in all things. Many little things add up to be big things.

Treasure, both physical and spiritual is worth seeking out. At times you will need to go out of your way to find it. You may need to get your hands dirty, get a little lost on the way, follow signs and consult maps. The journey alone is often worth it.

Did you forget that you are treasure and treasured? If so this is your meaning today. Worth does not come from outside yourself. Know that you have immense value.

Are you chasing buried treasure that is just a pipe dream? While the prize may be alluring you may have to reassess whether your time, energy and resources are better spent elsewhere before you are in too deep.

## *Shadow Meaning*

Missing the little things, unwilling to go for it, being distracted by new and shiny things.

## *Affirmation*

'I am treasured'

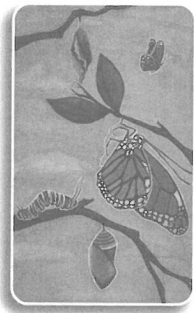
## *Personal Reflections*

What treasure am I seeking?

# *Trust*

Symbol - chrysalis

Keywords - deep knowing, relinquishing, faith, conviction, surrender



## *Awakened Soul Story*

**You are the caterpillar who is just about to enter into a process of transformation. The caterpillar does not know what beauty is waiting on the other side. It just follows the natural call and does what it is guided to do.**

**When a caterpillar is in the process of transforming into a butterfly, it's body is broken down completely and rebuilt. Now the newly-formed being has wings. The gift of flight allows for a completely different life experience from the one it used to have.**

## *Awakened Meaning*

You are being asked to trust the timing and the process of your life. It can be a big ask at times, especially when we are going through difficult times or waiting for results.

When we are working towards goals and we are doing all we can, it is the ultimate test to let go and just allow for the process to take time. Nature works and takes the time that it needs. The seasons change no matter what we do. Life trusts the process and you can too.

Carry out your day with gratitude and trust. Trust in yourself, trust in your intuition and your ability to create the results that you desire. Allow for the process and enjoy it as much as possible.

Begin the process of trusting yourself again. Trust that things happen for a divine reason. You will be able to trust your instincts and feelings and start to feel more like yourself. Trust that you will find love again. Trust that you will heal. The thing that makes space for this process is time. You are being asked to trust the process and how everything is unfolding.

## *Shadow Meaning*

Frustration, resisting the way that things are, force, impatience, lack of faith or belief.

## *Affirmation*

'I trust the process of how my life and learning is unfolding'

## *Personal Reflections*

What area in my life am I resisting at the moment?

# Truth

Symbol - throat chakra

Keywords - acceptance, genuine, pure, integrity



## *Awakened Soul Story*

Our Awakened Soul has activated her throat chakra by speaking truthfully and with pure intention. Before this she was sensing pain and a tickle in her throat which was not subsiding. When she finally said what she had been thinking about for days, the sensation left. Her energies in this chakra are open.

To celebrate this she has woven white chrysanthemums in her hair, as they are a symbol of truth. She smiles at the synchronicity that the fountain behind her is the color of the throat chakra. The flowing water, much like her communication, springs from within.

A level of clarity and freedom that she has not experienced before has enveloped her aura. Now knowing how liberating speaking the truth can be, she is much more assured that she will keep the vibration of truth with her going forward.

## *Awakened Meaning*

The Truth card has come to you today to ask that you see things as they are. There is what is and then there are the stories you tell yourself - these may ultimately become what you believe and take on as truth. Put a spotlight on the BS, call yourself out on it. This will allow you to move forward, as the truth can and will set you free, if you let it.

It may be obvious but it is time to tell the truth. No beating around the bush or trying to justify it. Just say it like it really is, with as much compassion as you can.

There are many universal, natural and man-made laws that all revolve around ideals of truth. Know which ones of these are mutable and which ones are actual. In a world where our realities are created and ever expanding, know that things can change.

If people are not being sincere in their actions or following up with their words, trust that they are showing you who they really are. Words without follow through lack integrity.

Truth can be tricky. Many spiritual people talk about speaking their truth, when really the ego has them hiding behind truth when they are just being plain mean. It may still be true, or at least to them, but what is the motivation of the person delivering the message? Is the integrity lacking? Speaking your truth isn't about making excuses.

## *Shadow Meaning*

Lies and deception, believing in stories, gossip, denial.

## *Affirmation*

'I speak in alignment with truth and integrity'

## *Personal Reflections*

What do I hold to be true in my life?

# Unplug

Symbol - power plug and cord

Keywords - connection, reality, nature, presence



## *Awakened Soul Story*

Our Awakened Soul has unplugged herself from the screens, social media, phones, television and all technology. All of the things that stop her from living in the now and connecting to what is real. She is grateful for all of the positive things that technology brings her but the cloud of static was starting to weigh her down.

She has looked out the window countless times, seeing the beauty of the outdoors, the wall being the only thing that separated her but she felt so much further away. Her soul craves connection but she was looking for it in the wrong places.

Leaving these distractions behind in her house, she doesn't even look back as she walks into the sunlight. Allowing the sun to recharge her in a divine way. Before she would have taken her phone, today she has decided to be present to the wonder around her.

## *Awakened Meaning*

The Unplug card has come to you today to share its meaning of finding real connection. It is time to put the phone down, put the devices away and get outside. Get your body moving.

This is also the card of being present to what is going on around you and not looking at life constantly through a lens or screen. Your life is the greatest miracle you are ever going to receive. Don't miss it.

While the internet and technology can create connections and communities, bringing joy to people's lives, check in to see if it is in fact running your life. A way to balance this is to create a schedule for yourself.

At your next social event why not suggest a device black out where everyone puts their phones down or away? Take it further and have the person who checks their phone first buy a round for everyone else. Have a no phone or technology policy at the dinner table. Talk to each other, look each other in the eyes and smile.

Are there friends and family members that you haven't connected with face to face for a long time? What have you been missing? This is life.

## *Shadow Meaning*

Over stimulation, hollow gratification, craving the approval of strangers, technology addiction, escapism.

## *Affirmation*

'I am connected to my highest and deepest self'

## *Personal Reflections*

What connection is my soul really seeking right now?



## *Vision*

Symbol - third eye chakra

Keywords - clarity, clairvoyance, sight, guidance



### *Awakened Soul Story*

Our Awakened Soul stands in a pose that is open to the universe, even though she has her eyes closed and it is night time. She is illuminated under a full moon which amplifies her magical power and gifts of vision. Her third eye chakra is open and activated.

She trusts that she will be able to see what she needs to see to be safe. Her crystal crown further helps elevate her energy. She is connected to her clairvoyance and ability to see through her third eye.

It has taken her some time and dedication to reach the point where she can see as clear as she can within her vision. She knows it is something that is available to anyone if they are open to it.

### *Awakened Meaning*

You have received the Vision card today as a sign to wait until you are very clear before making a decision. Look beyond what you are being

shown, there are unseen energies and universes all around us. Call on the magic of clear sight to aid you in this process.

You may be called to work on your psychic development and your clairvoyance. All energetic exercises that strengthen and stretch your psychic muscles are beneficial at this time. Like all muscles, if you don't use it, you lose it.

Close your eyes and shut out the noise of other people's opinions. Let go of what your senses may try to tell you if they aren't coming from a place of trust and wisdom. Can you see when your eyes are closed? Do you trust what you are being shown when you are open and connected to your guides?

Another aspect of this card is to create a vision for yourself, your life and career. Create goals, look at long-term and short-term plans. Be open to change, but inspire yourself by having a clear vision to put your passion and talent behind.

### *Shadow Meaning*

Ignoring insight, blocked third eye chakra and psychic abilities, inability to make decisions or see clearly, being lost.

### *Affirmation*

'I am open to divine clarity'

### *Personal Reflections*

How can you encourage your vision in life?

# Wisdom

Symbol - owl

Keywords - experience, understanding, sagesness, divine knowledge



## *Awakened Soul Story*

Our Awakened Soul stands in a field of wheat that is ready to harvest. While she has lost the ability of sight, she misses nothing. This sage oracle has accessed deep wisdom that comes with years of experience, training, and patience. She is sought out by others for her advice and counsel and is well respected.

She knows to look beyond the surface with people and situations, never to rush to judgement or underestimate people. She is wise but knows that there is always more to learn. She has not shut herself off from being a student of the universe as well as a teacher. Two owls, messengers from Athena, the Goddess of wisdom and strategy, join our Awakened Soul.

## *Awakened Meaning*

The Wisdom card has come up in your reading today as a reminder that wisdom is not rash. Wisdom waits, is perceptive and reasonable. Wisdom takes time. That is why many of our wise archetypes are crones and sages. You are being asked to bring these elements into your life today. Have you considered the long-term repercussions or motivations behind your choices?

Reflection is a key component to wisdom. Meditating or writing in a journal can allow you to find patterns and behaviours that are holding you back. What can you learn from your past? It is said that wise people can learn from other people's mistakes and avoid painful experiences. Reflection can also shine a light on your passion, purpose and strengths, all of which can be further developed once they have been uncovered.

The Wisdom card is asking you to try something new, ask lots of questions or start as an apprentice. There is wisdom in starting again as it expands and challenges different areas of your mind, body and soul.

We are students our whole lives. We are given opportunities every day to become wiser and more open to humility. Life can be our greatest teacher, it may not be the easiest teacher but it is the most committed.

## *Shadow Meaning*

Repeating the same patterns or mistakes over and over, rushing, not life experience to ground your knowledge, being stuck in your ways.

## *Affirmation*

'I am open to my inner wisdom'

## *Personal Reflections*

What wisdom would I pass on to my younger self or children?

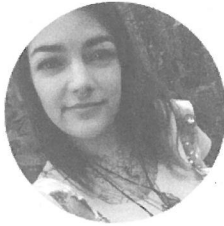
## *About the Creator*



*Ethony is a Tarot reader and author who loves to create more than sleep. She is the creator of the Bad Bitches Tarot, the Awakened Soul Oracle, the Prince Lenormand Oracle and the Money Magic Manifestation Cards. She is the headmistress at [www.TarotReadersAcademy.com](http://www.TarotReadersAcademy.com) where she teaches and mentors Tarot professionals and students through the courses available there.*

*She believes she is here to inspire people to start asking 'why' in their lives. Awakening souls, one at a time. Ethony has been a practicing eclectic Witch for over 18 years and runs the Awakened Soul Coven, an online and in-person learning circle for eclectic witches. You can find Ethony's online home and read all of the juicy content at [www.ethony.com](http://www.ethony.com)*

## *About the Artist*



*Danielle Mulligan is an artist, a mother and a divination lover from Newcastle, Australia. She has created for as long as she can remember being able to hold a pencil. Her biggest dream has always been to be an artist and have her greatest passion be her job, and what a wonderful job it is! She is also the creator of 3 amazing little humans and has an amazing partner who makes her smile and laugh her way through each and every day. Like Ethony, she has some of the best friends and family anyone could ever ask for. She hopes that her art inspires you to look around with wonder, as an Awakened Soul, and realise how beautiful this world we live in can be.*